

# AquaCal®

## Operation Manual



### Important

Read this document before operating / installing this product

For additional product manuals and operation / installation procedures, please visit [www.AquaCal.com](http://www.AquaCal.com)

[ \_\_\_\_\_ ]  
MODEL / SERIAL NUMBER



# Table of Contents

---

<b>Contacting AquaCal AutoPilot, Inc.</b>	<b>1</b>
<b>Safety Instructions</b>	<b>1</b>
<b>1 - Operation</b>	<b>3</b>
1.1 Wake Up Heat Pump	3
1.2 Display Panel	3
1.3 Activate Heat Mode, Cool Mode, Auto Mode, or Deactivate Equipment	6
1.4 Set Temperature	7
1.5 Set Up Programming	7
1.5.a Setting Date and Time	7
1.5.b Using Entry Code to Access Heat Pump	9
1.5.c Setting Entry Code Option	9
1.5.d Disabling Entry Code Option	11
1.6 External Equipment	12
1.6.a Operating Heat Pump with a Call Flex	12
1.6.b Operating Heat Pump (With an External Controller)	15
1.6.c Operating Heat Pump (With an External Flow Switch)	15
1.6.d Operating Heat Pump (With a Gas Back-Up)	15
d.1 Using Gas Boost	16
1.6.e Operating Multiple Connected Heat Pumps	18
<b>2 - Maintenance</b>	<b>19</b>
2.1 Water Chemistry	19
2.2 Cleaning Equipment	20
2.3 Clearances	21
2.4 Irrigation and Storm Run-Off	21
2.5 Water Flow Rates	22
2.6 Adjusting Water Flow Using $\Delta T$ (Delta-T)	23
2.7 Geothermal Menus	24
2.8 Planned Maintenance	26
2.9 Winterizing	27
<b>3 - Troubleshooting</b>	<b>30</b>
3.1 Fault Codes	31
3.2 Issues and Resolutions	35
<b>4 - Appendix</b>	<b>41</b>
4.1 Factory Defaults	41
4.2 Identifying Model Specifications	42
4.3 Weights	43
4.4 Heating Recommendations	44
4.5 Cooling Recommendations	44
4.6 Available Accessories	44

## Contacting AquaCal AutoPilot, Inc.

For further assistance, please contact the distributor or installer of this product.

If unavailable, please contact AquaCal® for a partner in your area. To better assist you, please have the heat pump model and serial number available.

- See "Identifying Model Specifications" on page 42.

Product Information:	
Website	www.AquaCal.com
Phone	(1) 727-823-5642
Hours	8-5 pm, Eastern M-F
Service Information:	
Website	www.AquaCal.com/request-heat-pump-service/

## SAFETY INSTRUCTIONS

- For personal safety, and to avoid damage to equipment, follow all safety instructions displayed on the equipment and within this manual. Repair and service of heat pump must be performed by an authorized service center.
- Warranties may be voided if the equipment has been improperly installed, maintained or serviced.
- If service is deemed necessary, please contact AquaCal. See "Contacting AquaCal AutoPilot, Inc." above.

### SAFETY SIGNALS

*Throughout this document, safety signals have been placed where particular attention is required.*



**DANGER**

Failure to heed the following will result in injury or death.



**WARNING**

Failure to heed the following may result in injury or death.

**NOTICE**

Failure to heed the following may result in damage to equipment.

When installing and using your heat pump basic safety precautions must always be followed, including the following:



**DANGER**

Failure to heed the following will result in injury or death.

- The heat pump utilizes high voltage. Use caution when servicing.
- Follow all National Electric Codes (NEC) and/or State and Local guidelines.





Failure to heed the following may result in injury or death.

- Installation and repairs must be performed by a qualified technician.
- The heat pump contains refrigerant under pressure. Repairs to the refrigerant circuit must not be attempted by untrained and/or unqualified individuals. Service must be performed only by qualified HVAC technicians. Recover refrigerant before opening the system.
- Improper water chemistry can present a serious health hazard. To avoid possible hazards, maintain pool/spa water per standards as detailed in this document.
- Prolonged immersion in water warmer than normal body temperature may cause a condition known as Hyperthermia. The symptoms of Hyperthermia include unawareness of impending hazard, failure to perceive heat, failure to recognize the need to exit the spa, and unconsciousness. The use of alcohol, drugs, or medication can greatly increase the risk of fatal Hyperthermia. People having an adverse medical history, or pregnant women should consult a physician before using a hot tub or spa. Children and the elderly should be supervised by a responsible adult.
- Prolonged immersion in water colder than normal body temperature may cause a condition known as Hypothermia. The symptoms of Hypothermia include shivering (although as hypothermia worsens, shivering stops), clumsiness or lack of coordination, slurred speech or mumbling, confusion and poor decision-making, drowsiness or low energy, lack of concern about personal welfare, progressive loss of consciousness, weak pulse and slow or shallow breathing. Persons having an adverse medical history, or pregnant women, should consult a physician before immersing in a cold body of water. Children and the elderly should be supervised by a responsible adult.

## **NOTICE**

Failure to heed the following may result in damage to equipment.

- Maintain proper water chemistry to avoid damage to the pump, filter, pool shell, etc.
- Water flow exceeding the maximum flow rate requires a bypass. Damage due to excessive water flow will void the warranty.

**SAVE THESE INSTRUCTIONS**

## 1 - Operation

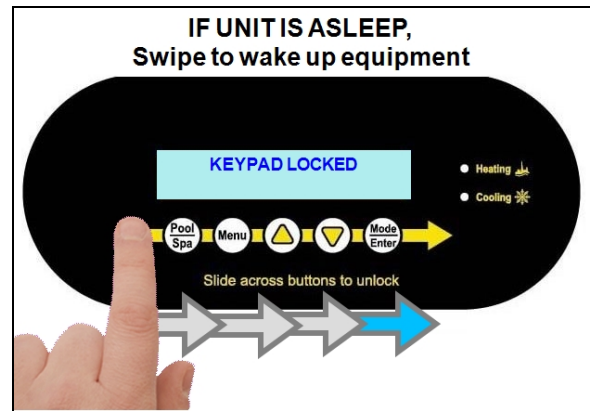
### IN THIS SECTION:

1.1 Wake Up Heat Pump	3
1.2 Display Panel	3
1.3 Activate Heat Mode, Cool Mode, Auto Mode, or Deactivate Equipment	6
1.4 Set Temperature	7
1.5 Set Up Programming	7
1.5.a Setting Date and Time	7
1.5.b Using Entry Code to Access Heat Pump	9
1.5.c Setting Entry Code Option	9
1.5.d Disabling Entry Code Option	11
1.6 External Equipment	12
1.6.a Operating Heat Pump with a Call Flex	12
1.6.b Operating Heat Pump (With an External Controller)	15
1.6.c Operating Heat Pump (With an External Flow Switch)	15
1.6.d Operating Heat Pump (With a Gas Back-Up)	15
1.6.e Operating Multiple Connected Heat Pumps	18

### 1.1 Wake Up Heat Pump

The display's backlight will be off when the heat pump is in sleep mode. To wake up the heat pump, slowly slide a finger across the buttons.

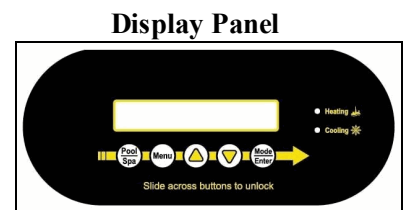
- The display will illuminate.
- The message "KEYPAD UNLOCKED" will briefly appear.
- Then the water temperature and mode will display.









### 1.2 Display Panel

The following information outlines the operation for a standard installation.

- Control Buttons will operate differently for custom installations; such as when a heat pump is connected to an external controller or multiple heat pump configuration.
  - See "Operating Heat Pump (With an External Controller)" on page 15.
  - See "Operating Multiple Connected Heat Pumps" on page 18.



## Buttons

Buttons	Description
	Slowly slide a finger across the buttons from left to right to disable the sleep mode. Sleep mode will automatically reactivate after three minutes have passed.
	Select either the pool or the spa thermostat.
	Enter the user menu for heat pump options.
	Used to increase temperature set point and navigate through menu options.
	Used to decrease temperature set point and navigate through menu options.
	Used to select the heat pump's operating mode. Also used to edit or confirm options in a menu.

## Indicator Lights

Indicators	Description
Heating	Red LED indicates the unit is heating the water.
Cooling	Blue LED indicates the unit is cooling the water.
When calling for heating or cooling, up to a three-minute delay may occur before the compressor starts. The compressor must be operating before the indicator will illuminate.	

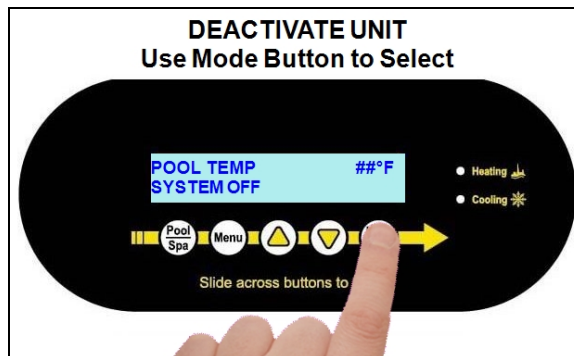
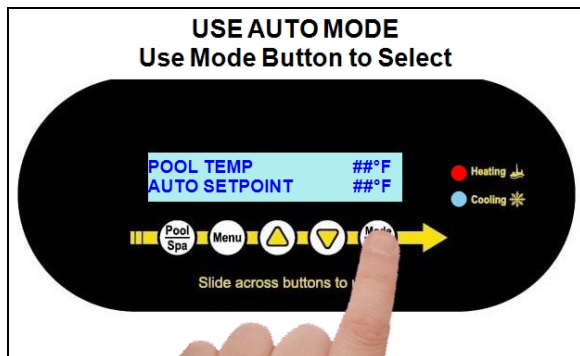
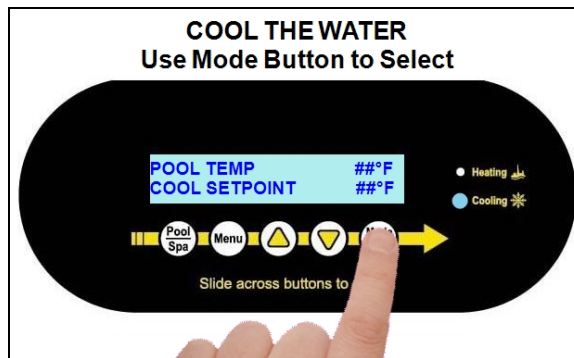
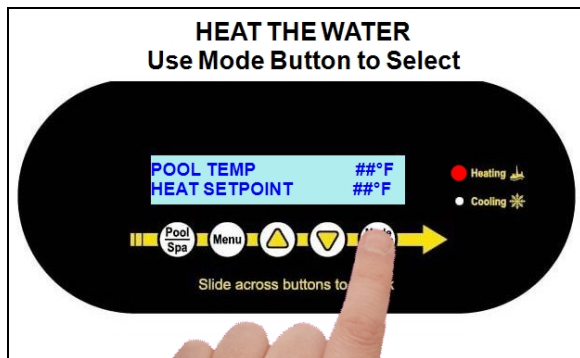
## Display

	Display	Description
Entry code required	ENTRY CODE 00	The heat pump has a user lock enabled. See "Using Entry Code to Access Heat Pump" on page 9.
No water flow detected from circulation pump	NO POOL/SPA WATER FLOW HEAT SETPOINT 75°F	No water flow is detected. The filter pump is off or the heat pump is not receiving the correct water flow.
No water flow detected from geothermal source	NO SOURCE WATER FLOW HEAT SETPOINT 75°F	No water flow is detected from geothermal source. The geothermal pump is off or the heat pump not receiving the correct water flow.
Primary Heat Pump	POOL TEMP 71°F MASTER UNIT	Primary heat pump controlling other connected heat pumps
Remote Controlled - by master (primary) Heat Pump	WATER TEMP 71°F SLAVED UNIT 01	Heat Pump is set to be controlled by another connected heat pump.
Remote Controlled - by external controller	WATER TEMP 75°F UNDER REMOTE CONTROL	Heat Pump is set to be controlled by an external controller.
Set to 75° F - Maintaining	POOL TEMP 70°F AUTO SETPOINT 75°F	Maintaining a water temperature set on the thermostat. In this example, the pool thermostat has been set to 75° F.
Set to 45° F - Cooling	POOL TEMP 70°F COOL SETPOINT 45°F	Cooling water to point set on the thermostat. In this example, the pool thermostat has been set to 45° F.
Set to 75° F - Heating	POOL TEMP 70°F HEAT SETPOINT 75°F	Heating water to point set on the thermostat. In this example, the pool thermostat has been set to 75° F.
Set to Off	POOL TEMP 70°F HEAT PUMP OFF	The heat pump has been deactivated using the "Mode / Enter" button.

### 1.3 Activate Heat Mode, Cool Mode, Auto Mode, or Deactivate Equipment

Press "Mode / Enter" button until the desired mode is displayed.

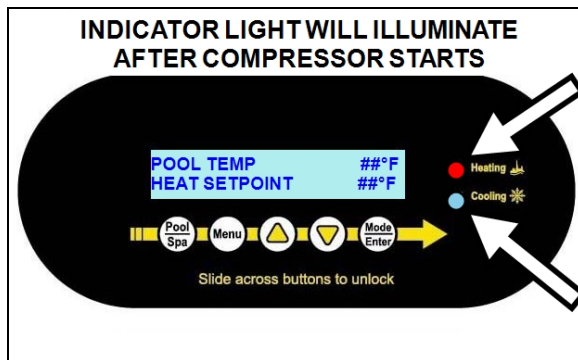
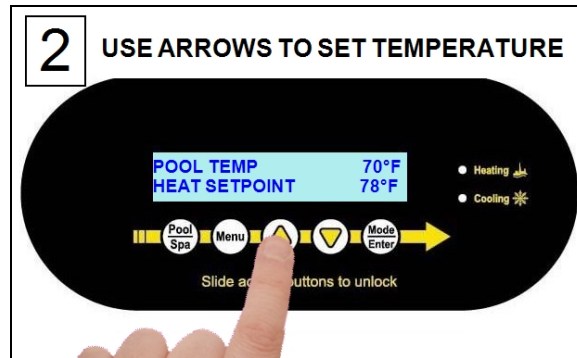
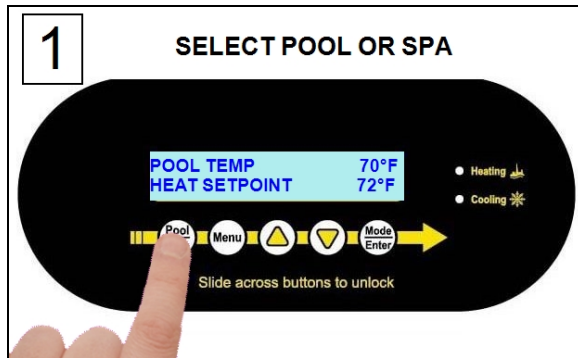
- HEATING MODE- After the fan and compressor start, the red "Heating" light will activate.
- COOLING MODE - After the fan and compressor start, the blue "Cooling" light will activate.
- AUTO MODE - After the fan and compressor start, the heat pump will maintain the set temperature within 1°. The red "Heating" or blue "Cooling" light will activate.
- OFF - The heat pump will indicate it is deactivated. The current water temperature will be displayed.



## 1.4 Set Temperature

Select the pool or spa thermostat. Then press the up or down arrow to set the desired temperature (setpoint) for the water.

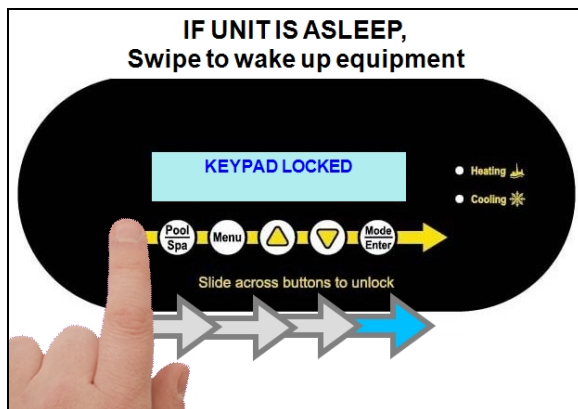
- The heating indicator will illuminate when heating the water.
  - The maximum allowed set temperature for a Water Source unit is 96° F (35.6° C). If an over temperature safety device has been installed, the maximum allowed set temperature is 104° F (40° C). See "Over Temperature Alarm Kit" on page 45.
- This kit comes standard for SunPower equipment.
- The cooling indicator will illuminate when cooling the water.

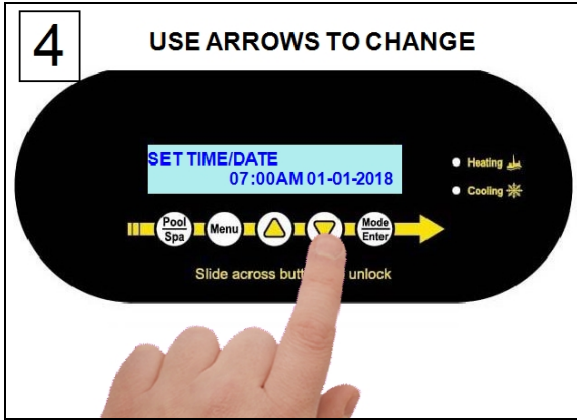
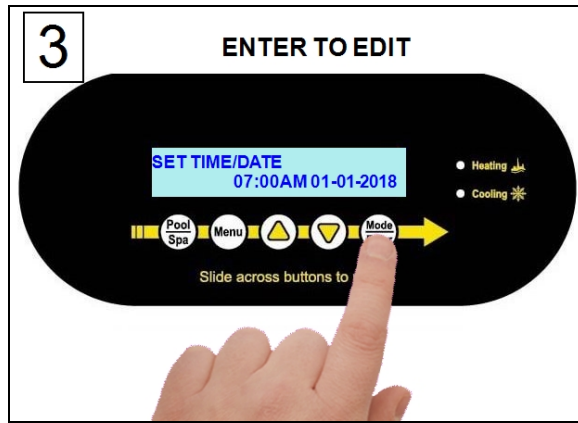
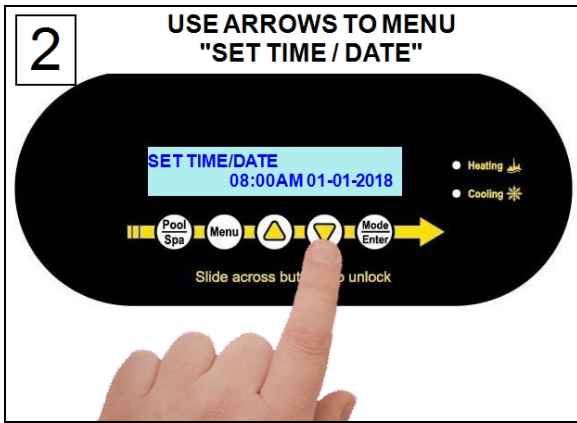


## 1.5 Set Up Programming

### 1.5.a Setting Date and Time

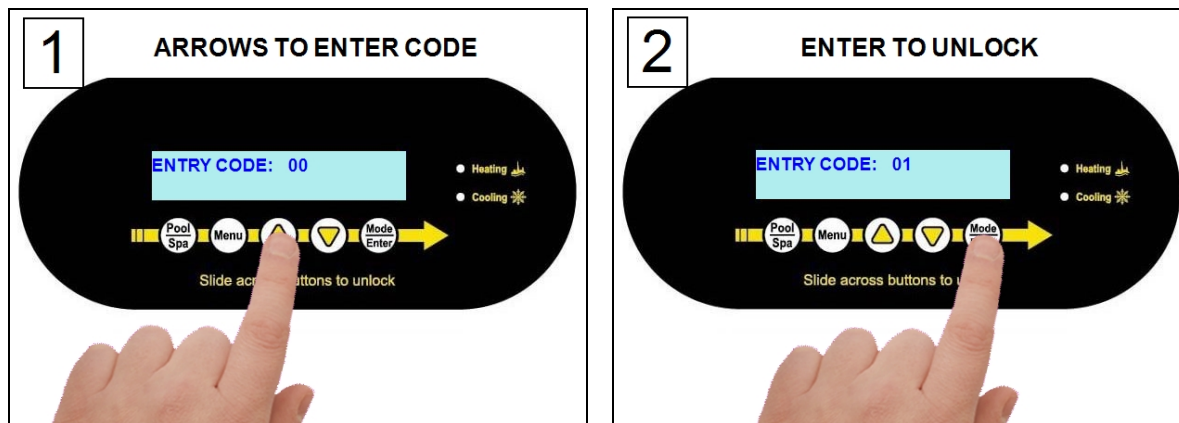
Set the heat pump's time and date using the following steps.





### 1.5.b Using Entry Code to Access Heat Pump

If a user entry code has been enabled in the user menu, an entry code will be required to access heat pump options.



#### PLEASE NOTE -

- If the entry code has been misplaced, the heat pump will need to be reset to factory defaults.
- After three minutes of inactivity, the heat pump's sleep mode will activate. See "Wake Up Heat Pump" on page 3.

### 1.5.c Setting Entry Code Option

The entry code feature can prevent unauthorized temperature adjustments. This feature initiates after the heat pump goes into the sleep mode for the first time.

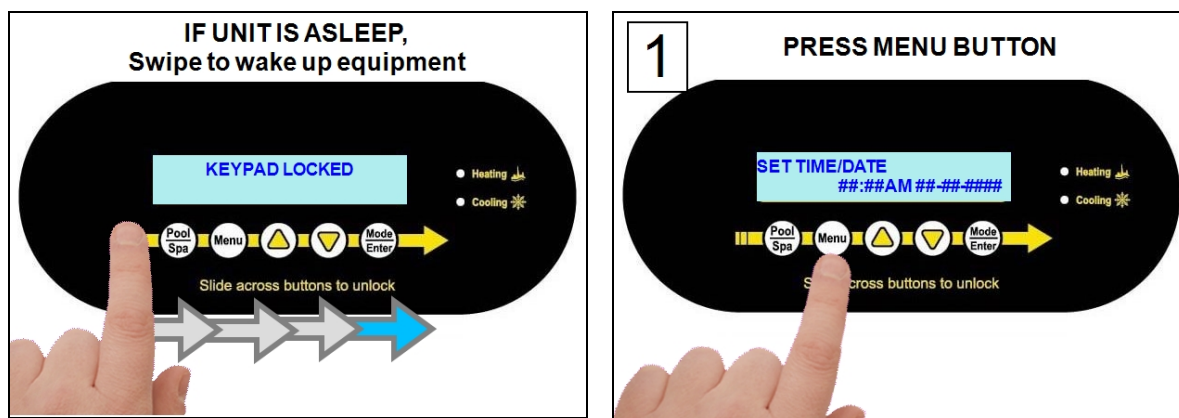
#### NOTICE

Failure to heed the following may result in damage to equipment.

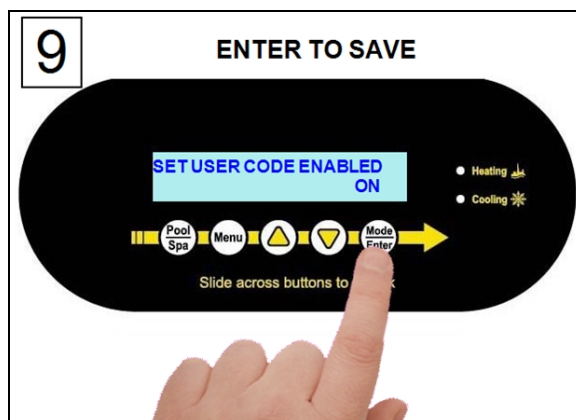
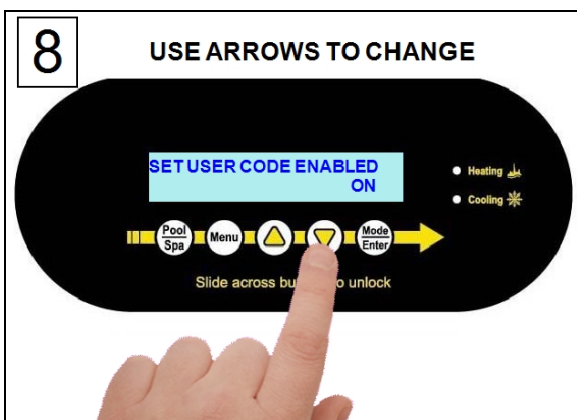
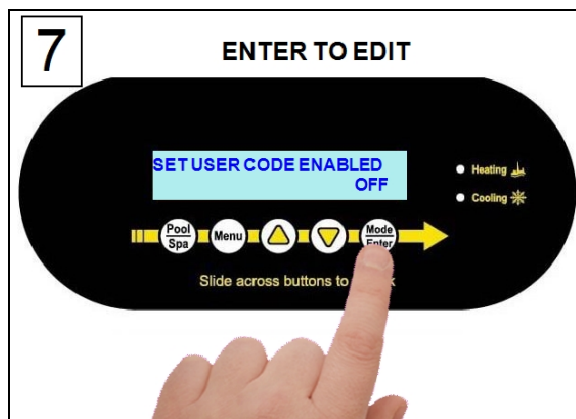
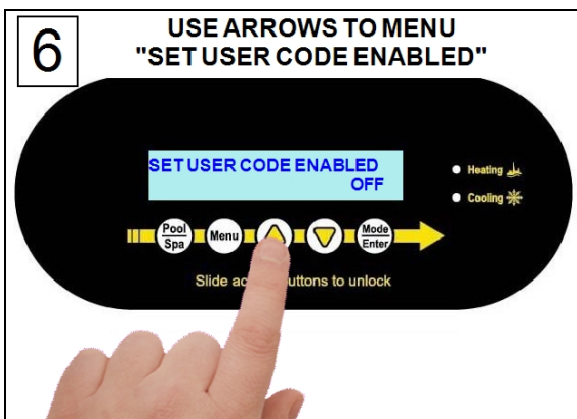
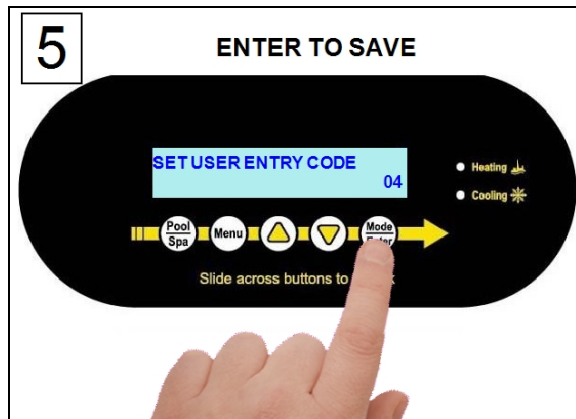
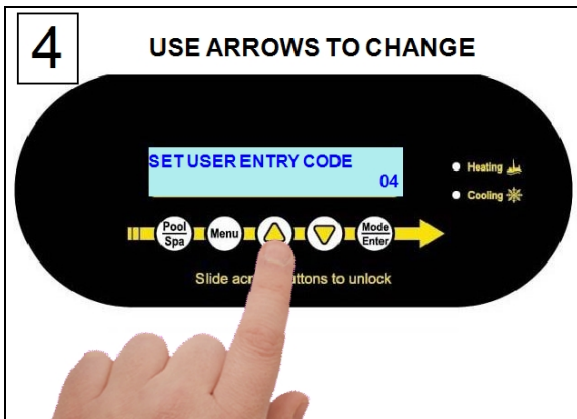
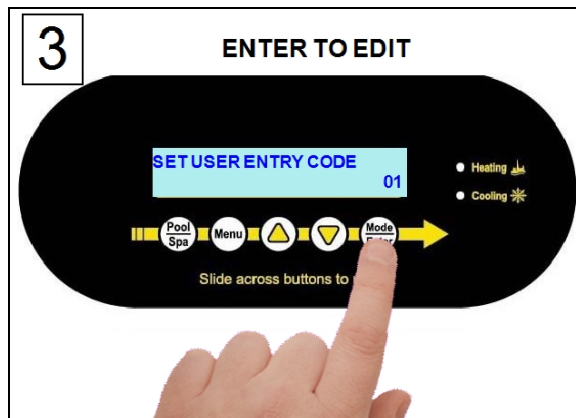
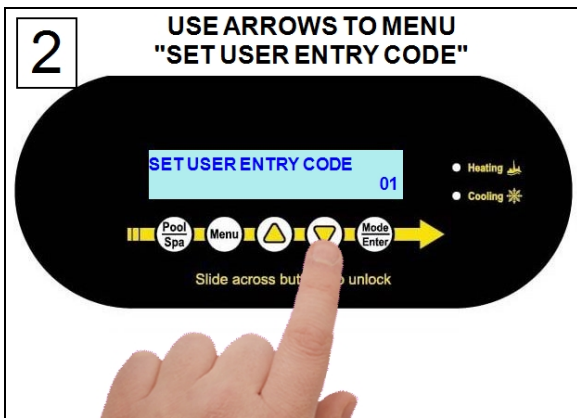
- **Before enabling the entry code feature, be sure to record the code.** If lost, the heat pump will require a program reset to regain access. This reset may require additional configuration by the installer.

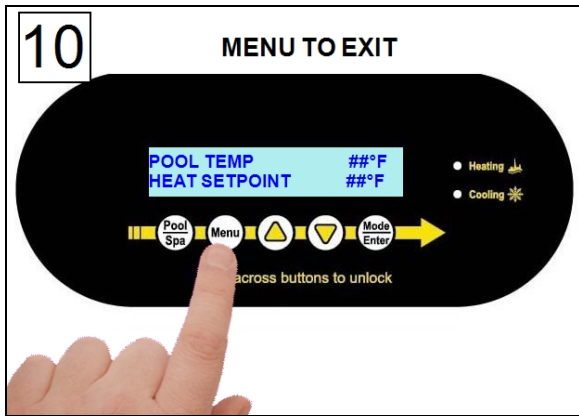
#### PLEASE NOTE -

*A heat pump requesting an entry code is different than the control panel's sleep mode. (See Wake Up Heat Pump on page 3 for more information.)*





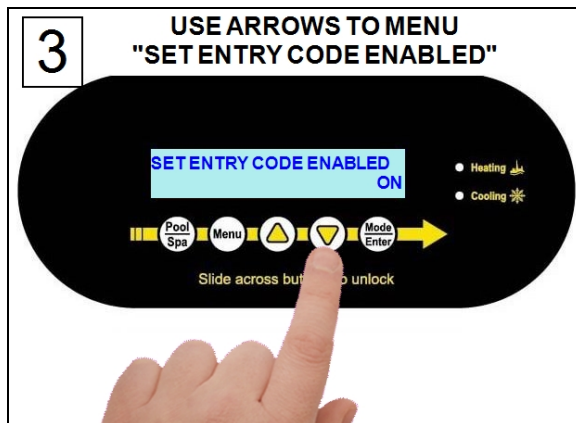
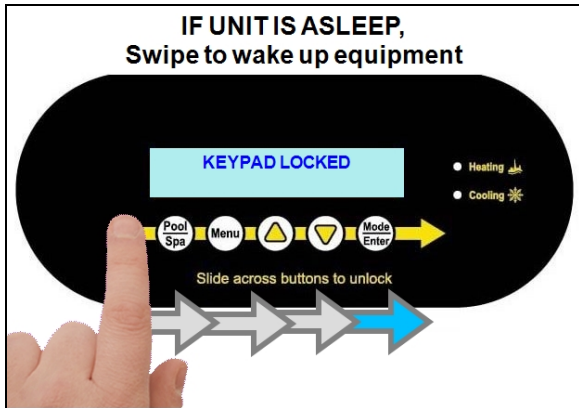


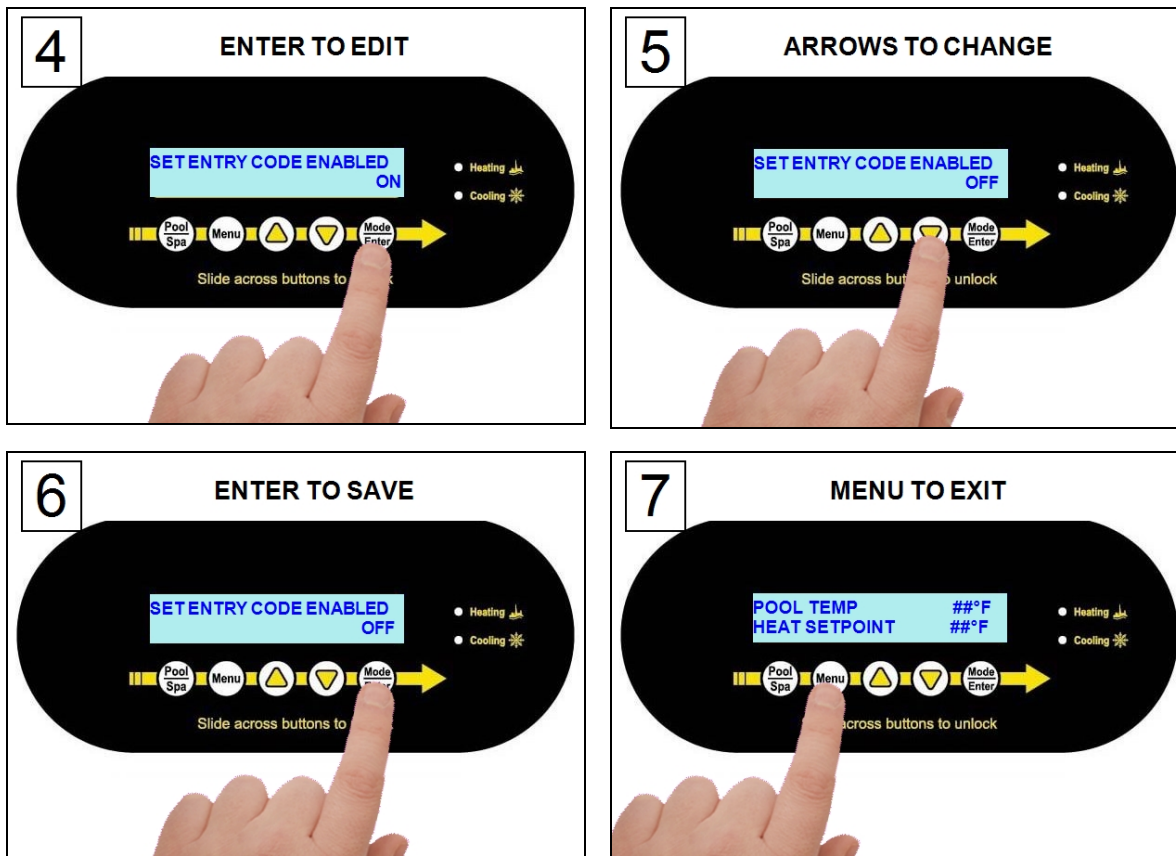


### 1.5.d Disabling Entry Code Option

**PLEASE NOTE -**

- If the heat pump displays a **KEYPAD LOCKED** message, the heat pump is in sleep mode. See "Wake Up Heat Pump" on page 3.
- If an entry code has already been activated, the code must be entered before proceeding to disable.





## 1.6 External Equipment

### 1.6.a Operating Heat Pump with a Call Flex

When a Call Flex has been installed and configured for a heat pump, the circulation pump will respond to commands from the heat pump. Confirm with the installer if a Call Flex accessory has been installed on the system. See "*Call Flex Accessory (# 0030-LEDS)*" on page 44.

- If installed, the operator has the option of changing how this accessory works using either "CALL" mode, "FLEX" mode, or "OFF" (Default).

#### Using Call Mode:

When the accessory is in CALL (or override) mode, the circulation pump will be set to periodically activate. This allows the heat pump to sample the water temperature.

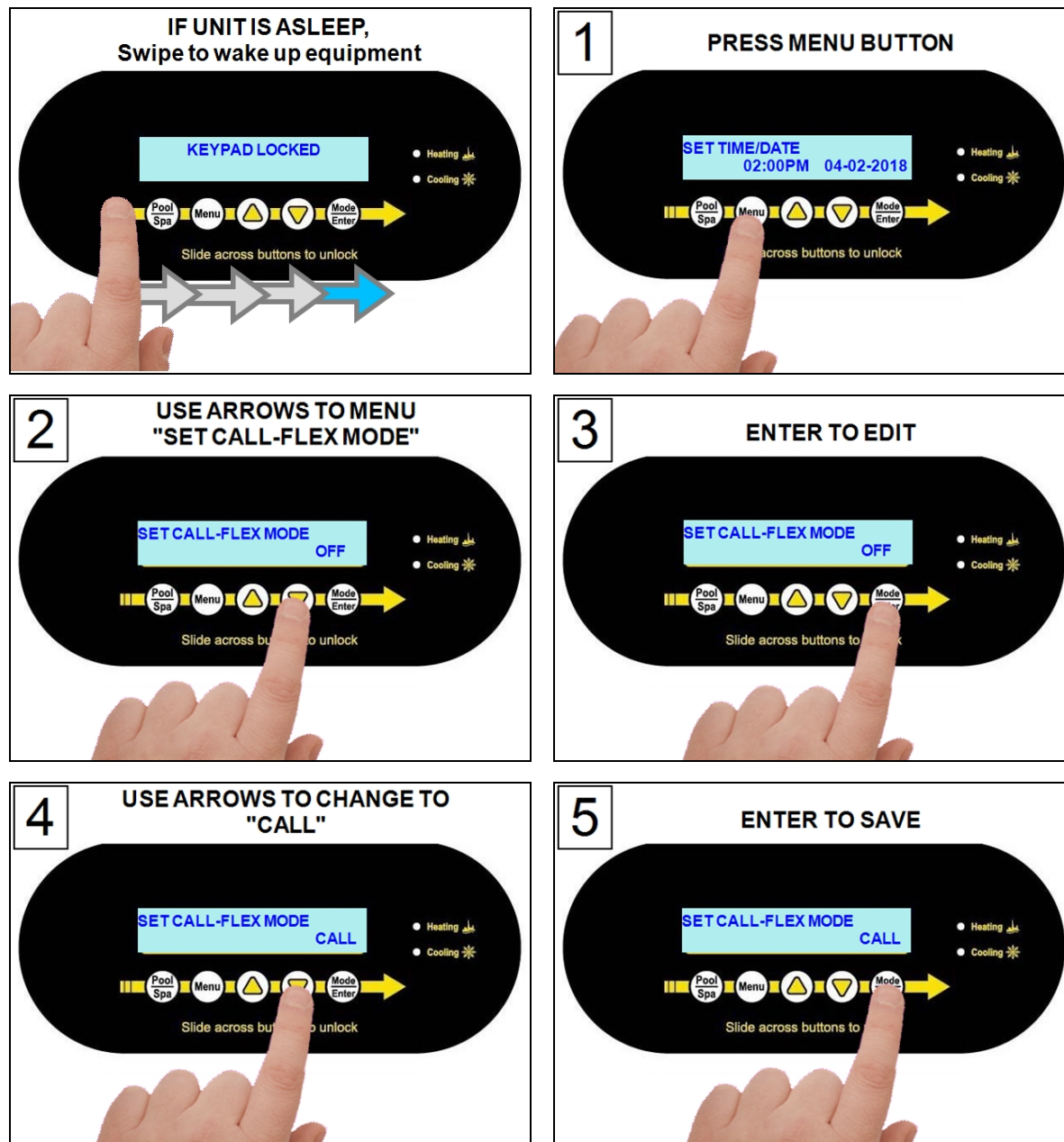
- The default is 2 hours between each activation.
- The water temperature will be sampled for 30 seconds.
- If the water temperature has fallen below the set temperature, the circulation pump will allow the heat pump to operate until the set temperature is reached.

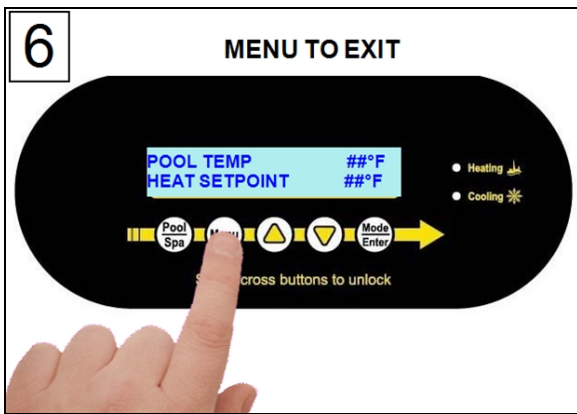
## Using Flex Mode:

When the accessory is in **FLEX** (or extend) mode, the heat pump will start to heat if the set temperature is lower than the water temperature and the heat pump has water flow. *The circulation pump does not automatically activate in this mode.*

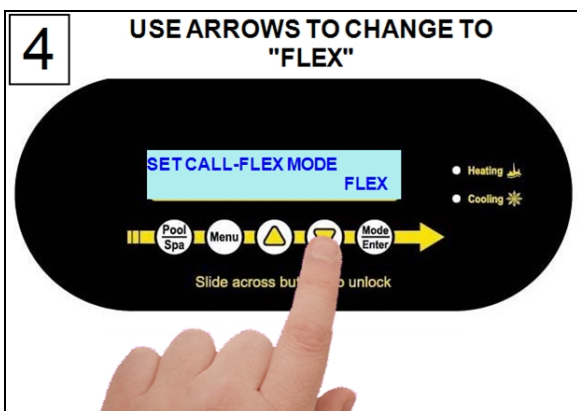
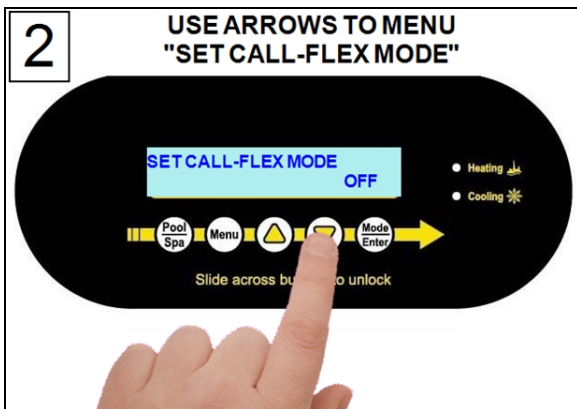
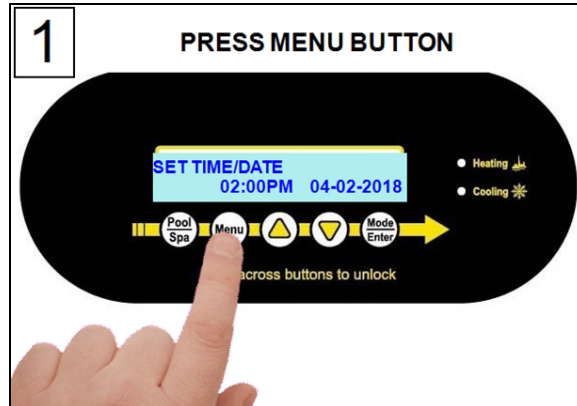
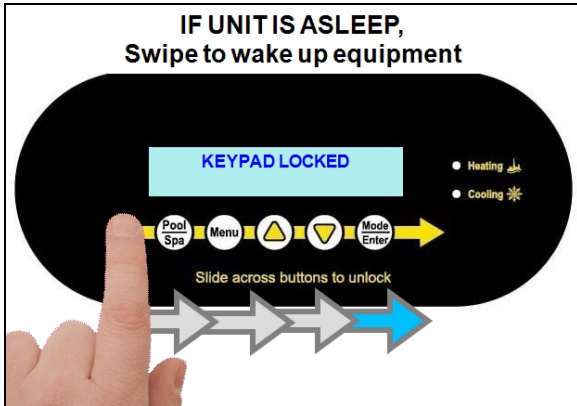
- If the desired water temperature has not been met by the end of the circulation pump's schedule, the normal "time-off" setting will be overridden.
- The circulation pump will continue to operate until the set temperature has been met.
- The circulation pump will then deactivate until the next normally scheduled start time.

## Configure for Call mode:

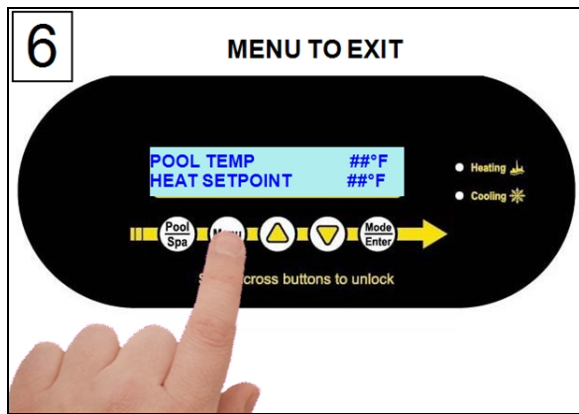




### Configure for Flex mode:

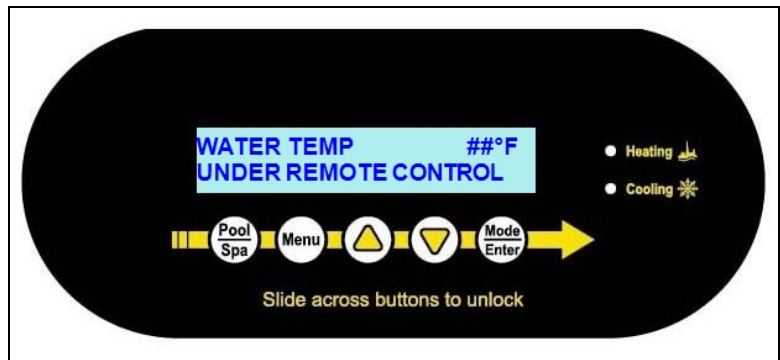






### 1.6.b Operating Heat Pump (With an External Controller)

If the display indicates the unit is under remote control, an external control device has been configured to control the heat pump. See the external control device manual. Or contact installer or manufacturer of that device.



**PLEASE NOTE:**

*When using a SMART external control device, the time-out and service modes will deactivate the Heat Pump.*

### 1.6.c Operating Heat Pump (With an External Flow Switch)

When an external flow switch has been installed and enabled, the heat pump will automatically switch from pool to spa temperature settings when there is flow through the external flow switch. The "Pool/Spa" button will be disabled when this device is configured in the system.

Confirm with the installer if an external flow switch has been installed on the system.

### 1.6.d Operating Heat Pump (With a Gas Back-Up)

If a gas backup heater is installed, it will be configured in one of two modes by the installer (Scheduled mode or 24-hour mode). This affects how the heater operates.

**PLEASE NOTE -**

*Gas backup modes are only available when the ambient air temperature is below 60° F. See "Using Gas Boost" on the facing page for an exception.*

## Scheduled Mode

### *When heating the Pool:*

- The heat pump will operate for one hour. Then a calculation is made on how fast the water temperature is rising (a rate of rise).
- If an insufficient amount of time is provided for the heat pump to heat the water, the gas backup heater will be activated.
- When the set temperature has been reached, the gas heater will deactivate.
- The heat pump will continue to maintain the water temperature.

### *When heating the Spa:*

- If the water temperature is lower than 2° F (1.1° C) below the set temperature, and the ambient air temperature is below 60° F (15.6° C), the gas heater will activate.
- When the set temperature has been reached, the gas heater will deactivate.
- The heat pump will continue to maintain the water temperature.

## 24 Hour Mode

- This mode is usually used when the circulation pump runs continuously.
- The gas heater will activate when the water temperature falls 2° F (1.1° C) below the set temperature and the ambient air temperature is below 60° F (15.6° C).
- When the set temperature is reached, the gas heater deactivates. The heat pump then maintains the water to the set temperature. If the water temperature again falls 2° F (1.1° C) below the set temperature, the gas backup will reactivate.

### d.1 Using Gas Boost

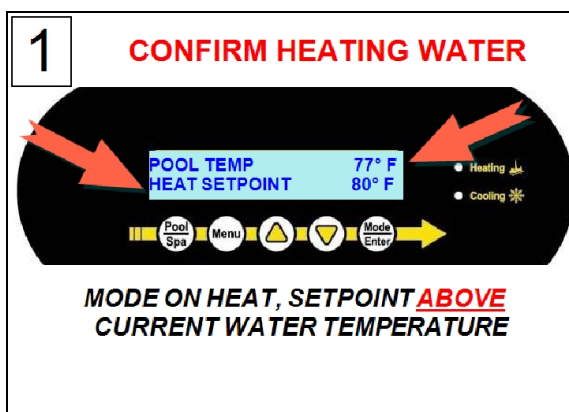
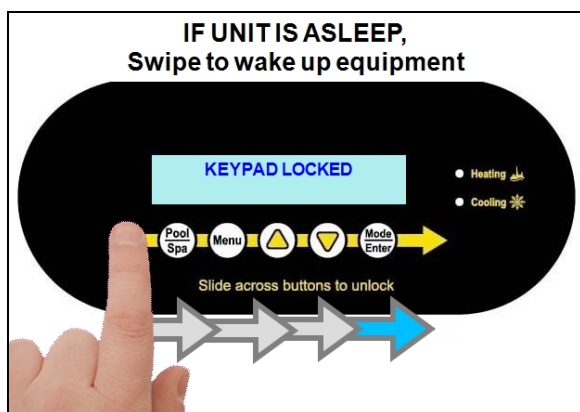
When a gas backup heater is installed, the user has the option of using a gas boost to heat the water quicker.

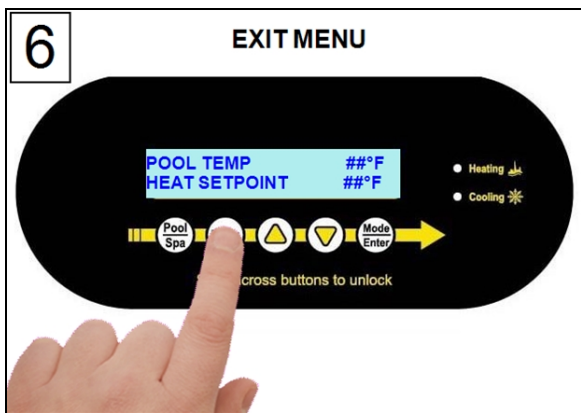
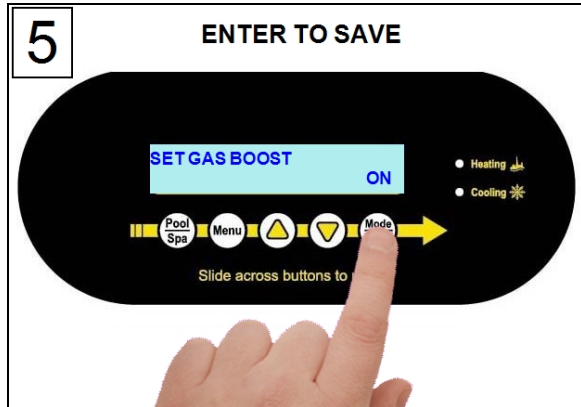
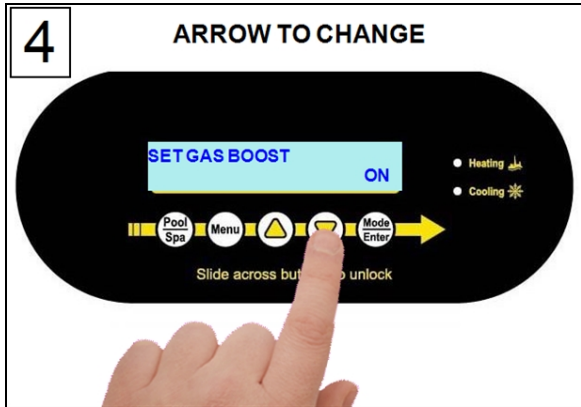
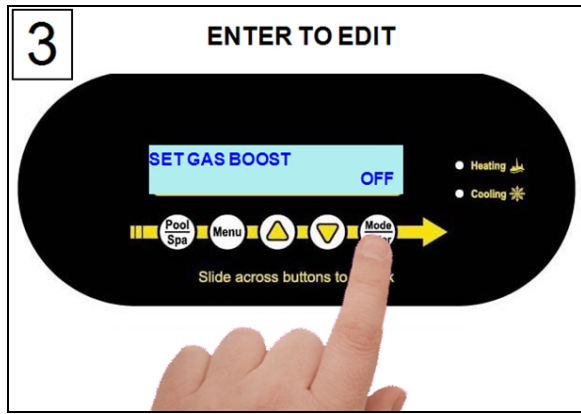
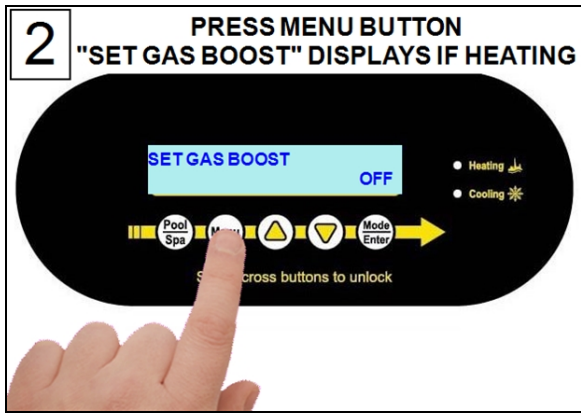
- This option is available regardless of the gas heater's configuration mode set by the installer (Scheduled Mode or 24 Hour Mode).
- When the set temperature is reached, the gas heater will deactivate. The heat pump then continues to maintain the temperature set point. The gas heater will revert to its normal mode (either 24-hour or scheduled).

#### **PLEASE NOTE -**

*The "Gas boost" option is available regardless of outside air temperature.*

*This option, however, will only appear in the user menus when the heat pump is actively heating the water.*





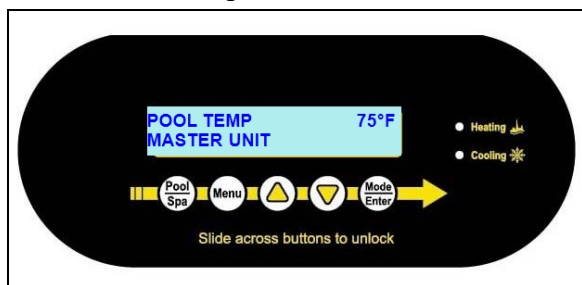


### 1.6.e Operating Multiple Connected Heat Pumps

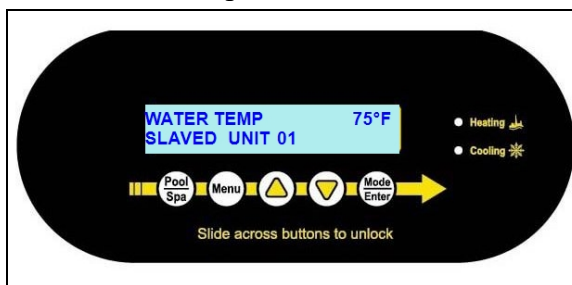
Each heat pump will indicate whether it is a master or slaved unit on the display. Changes in mode and operation are made on the master (primary) heat pump only.

- The master heat pump will automatically start and stop the slaved heat pumps in a timed and controlled sequence.

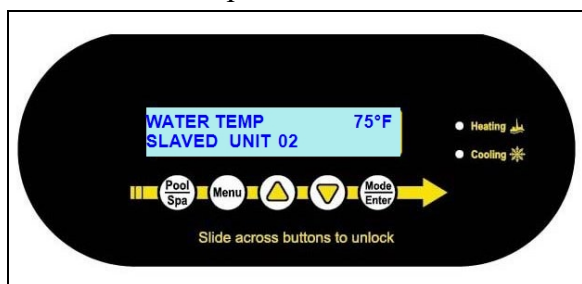
Master Heat Pump



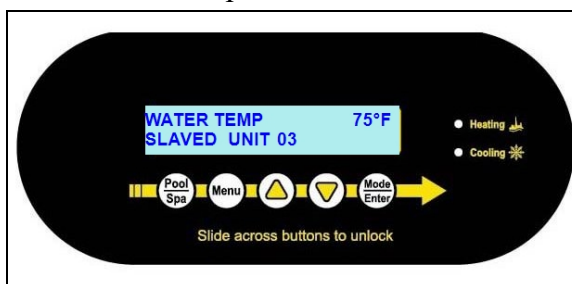
Slaved Heat Pump 01



Slaved Heat Pump 02



Slaved Heat Pump 03



### IN THIS SECTION:

2.1 Water Chemistry .....	19
2.2 Cleaning Equipment .....	20
2.3 Clearances .....	21
2.4 Irrigation and Storm Run-Off .....	21
2.5 Water Flow Rates .....	22
2.6 Adjusting Water Flow Using $\Delta T$ (Delta-T) .....	23
2.7 Geothermal Menus .....	24
2.8 Planned Maintenance .....	26
2.9 Winterizing .....	27

### 2.1 Water Chemistry

Check water chemistry regularly and maintain within recommended levels. Standards vary in different residential and commercial applications. Follow all local applicable codes.

#### NOTICE

Failure to heed the following may result in damage to equipment.

- Do not allow water to flow through the heat pump when refinishing or acid washing a pool. Use an installed bypass to route water away from the heat pump or deactivate the filter pump.
- To avoid damage to equipment, monitor and maintain chemistry within recommended levels.


#### CHEMISTRY LEVEL CHART (RESIDENTIAL)

CHEMICAL	POOLS	SPAS
<b>Chlorine</b>	1.0 – 3.0 ppm (1 – 3 mg/L)	3.0 – 5.0 ppm (3 – 5 mg/L)
<b>Bromine</b>	2.0 – 6.0 ppm (2 – 6 mg/L)	2.0 – 6.0 ppm (2 – 6 mg/L)
<b>Cyanuric Acid</b>	30 – 50 ppm (30 – 50 mg/L)	30 – 50 ppm (30 – 50 mg/L)
<b>pH</b>	7.4 – 7.6	7.4 – 7.6
<b>Total Alkalinity</b>	80 – 120 ppm (80 – 120 mg/L)	80 – 120 ppm (80 – 120 mg/L)
<b>Calcium Hardness</b>	200 – 400 ppm (200 – 400 mg/L)	150 – 250 ppm (150 – 250 mg/L)
<b>Total Dissolved Solids*</b>	0 – 1500 ppm (0 – 1.5 g/L)	1500 (1.5 g/L) ppm above start-up of total dissolved solids in spas

\* Salt from a chlorine generator is not included in Total Dissolved Solids.

2.2 Cleaning Equipment

Cleaning and polishing the heat pump regularly can protect its appearance and longevity. More frequent servicing may be required for heat pumps located in sandy or coastal areas where sand and salt spray can damage equipment.

 **WARNING**

Failure to heed the following may result in injury or death.

- Possible electric shock hazard - Deactivate power to all electrical devices on the pad when washing heat pump. Do not restore electrical power until equipment is completely dry.

**NOTICE**

Failure to heed the following may result in damage to equipment.

- Do not use a pressure cleaner to wash the heat pump. Damage to heat pump components may result. If using a hose-end spray nozzle adjust the spray pattern to low strength only.
- Do not spray water directly into the interior of the heat pump; damage to components may result.
- Do not use chemicals on the display panel.

Cleaning

1. Wash cabinet using a low-pressure water hose.
2. While the heat pump is still wet, use an approved cleaning agent to clean the exterior of the heat pump. **Do not use chemicals on the display panel.**
3. Use a detergent-dampened cloth to wipe the heat pump's exterior cabinet.
4. Flush all exterior with fresh water using a low-pressure water hose.
5. Dry the cabinet's exterior using a soft cloth.

APPROVED CLEANING AGENTS*
Fantastic®
Formula 409®
Cascade®
All Power Plain Detergent (3% Solution)

Table 1 - Cleaning Agents

\* The trademarks used in approved cleaning agents are the property of their owners and are not related to AquaCal®.

Polishing

1. Polish the heat pump's cabinet panels using an approved polishing agent and following the manufacturer's instructions. **Do not use chemicals on the display panel.**
2. Rinse the heat pump panels with fresh water, wipe, and buff panels using a dry soft cloth.
3. Allow heat pump interior and surrounding equipment to "air-dry" for several hours prior to restoring electrical power.

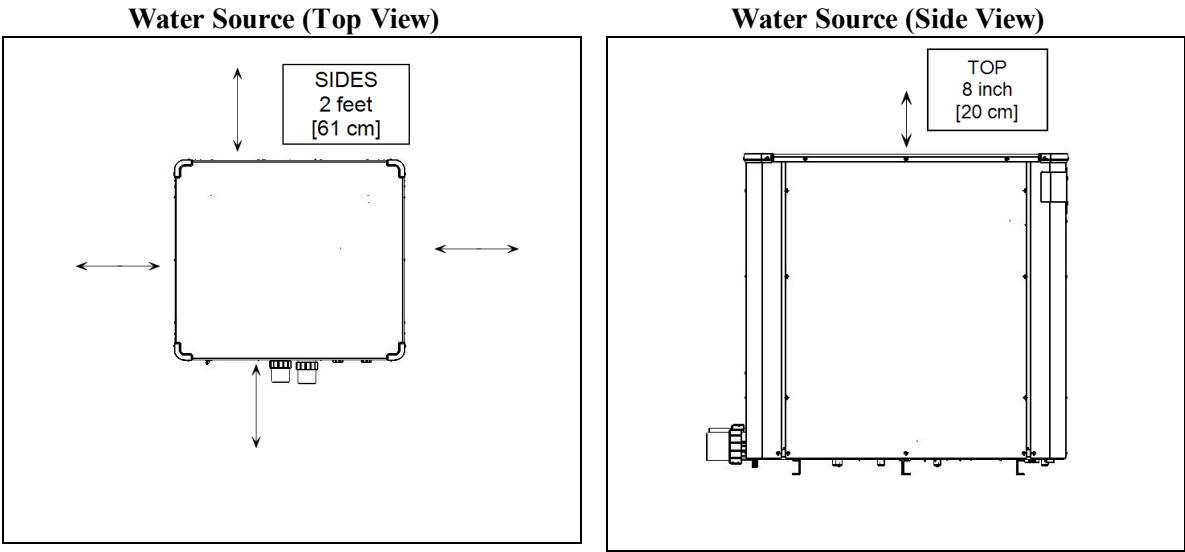
APPROVED POLISHING AGENTS*
Simoniz® Wax
Glo-Coat®
Aarmor All® Protectant

Table 2 - Polishing Agents

\* The trademarks used in approved polishing agents are the property of their owners and are not related to AquaCal®.

2.3 Clearances

- Avoid storing chemical containers near the heat pump. The chemicals can cause equipment damage.
- Avoid placing objects near or on top of the heat pump. This includes shrubbery and lawn furniture. These objects will hinder maintenance access.



2.4 Irrigation and Storm Run-Off

- Irrigation water may damage heat pump components. Direct irrigation water away from the heat pump.
- The heat pump will withstand normal rainfall. Do not allow a roof slope to direct rainwater onto the heat pump. Have a gutter installed on the roof edge to direct this water away from the heat pump. Or install the heat pump in another location.

## 2.5 Water Flow Rates

Maintain water flow rates as indicated. Please note, these specifications relate to the heat pump only. Code-specified whole system turnover rates must be satisfied.

### NOTICE

Failure to heed the following may result in damage to equipment.

- Water flow exceeding maximum flow rates will negatively affect the total pool filtration performance and may damage the heat pump. This will not be covered under the equipment warranty.

#### Water Source

MODEL	SOURCE	HEAT EXCHANGER TYPE	FLOW RATES	
			MINIMUM	MAXIMUM
WS03	Source-Side	Titanium ThermoLink®	20 GPM (75.7 L/min)	70 GPM (265 L/min)
		Cupronickel	10 GPM (37.9 L/min)	14 GPM (53 L/min)
	Pool / Spa	Titanium ThermoLink®	30 GPM (113.6 L/min)	70 GPM (265 L/min)
WS05	Source-Side	Titanium ThermoLink®	20 GPM (75.7 L/min)	70 GPM (265 L/min)
		Cupronickel	10 GPM (37.9 L/min)	18 GPM (68 L/min)
	Pool / Spa	Titanium ThermoLink®	30 GPM (113.6 L/min)	70 GPM (265 L/min)
WS10	Source-Side	Titanium ThermoLink®	30 GPM (113.6 L/min)	70 GPM (265 L/min)
		Cupronickel	30 GPM (113.6 L/min)	54 GPM (204.4 L/min)
	Pool / Spa	Titanium ThermoLink®	30 GPM (113.6 L/min)	70 GPM (265 L/min)

#### SunPower

MODEL	SOURCE	HEAT EXCHANGER TYPE	FLOW RATES	
			MINIMUM	MAXIMUM
SP05	Source-Side	Titanium ThermoLink®	20 GPM (91 L/min)	70 GPM (265 L/min)
	Spa Side	Titanium ThermoLink®	30 GPM (113.6 L/min)	70 GPM (265 L/min)

#### PLEASE NOTE -

If minimum flow rates are not met, heat pump performance is reduced and performance will suffer. Internal safety devices may deactivate the heat pump with the following errors:

- HIGH PRESSURE FAULT**
- HP5 SYSTEM LOCKOUT**
- LOW PRESSURE FAULT**
- LP5 SYSTEM LOCKOUT**

- Operate water filtration devices per manufacturer's specifications. Dirty filters can cause a reduction of water flow to the heat pump. An increase of 7-10 psi (48 to 69 kPa) higher than the clean filter pressure typically reduces flow rates. This requires the filter to be cleaned or back-washed.
- Keep baskets free of debris. A large quantity of debris in the pump and skimmer baskets can reduce water flow.
- Check for improper valve settings. A partially closed valve after the filter, or a full-open bypass around the heat pump, will cause insufficient water flow through the heat pump.
- The maximum static pressure (or operating pressure) is 50 psi (345 kPa) unless a special "high-pressure" unit has been ordered. These specifications relate to the heat pump only.
- Code-specified whole system turnover rates must be satisfied.

## 2.6 Adjusting Water Flow Using $\Delta T$ (Delta-T)

The Delta-T is the temperature difference between the water temperatures entering and leaving the heat pump. The equipment can be fine-tuned for maximum performance by balancing water flow rates to maintain an ideal  $\Delta T$ .

**The adjustment procedure must be completed with the unit in heating mode.**

### **PLEASE NOTE -**

- See "Temperature Port Kit (# STK0096)" on page 46.

1. Adjust the thermostat to its lowest setting with the unit in heating mode.
2. Deactivate the water filtration pump.
3. Confirm that the filters leading to the heat pump are clean.
4. Adjust the valves controlling water headed towards the heat pump to the half-open position.
5. Adjust the valves controlling water leading away from the heat pump to a fully open position.
6. Activate the pool water filtration pump.
7. Slowly raise the thermostat temperature until the heat pump activates.
  - The source-water filtration pump will cycle on first.
  - After a three-minute delay, the heat pump's compressor will start.
8. With the heat pump running, confirm the source-side water filtration pump is operating properly with adequate flow and no short cycling.
9. Wait for water temperatures to stabilize (approximately 5 minutes).
10. Open the temperatures differences screen in the Geothermal Menus. See "*Geothermal Menus*" on the facing page.
12. Adjust valves in the following order using the temperature chart provided.
  - a. Adjust the source-side valve on the heat pump outlet until the correct temperature differential is achieved.
  - b. Adjust the pool-side valve that controls water exiting the heat pump until the correct temperature differential is achieved.
  - c. Wait for water temperatures to stabilize. Then check the source-side temperature again. Re-adjust the valve as needed.
13. Mark valves at these positions for future reference.

**TEMPERATURE DIFFERENCES**  
**SOURCE= 6°F POOL= 8°F**

HEAT EXCHANGER TYPE	MODEL	SOURCE-SIDE	POOL-SIDE
Titanium pool-side and source-side exchangers	WS03	1° to 5° F (.5° C to 2.8° C)	2° to 4° F (1.1° C to 2.2° C)
	WS05	2° to 8° F (1.1° C to 4.4° C)	3° to 6° F (1.7° C to 3.3° C)
	WS10	5° to 12° F (2.8° C to 6.7° C)	6° to 14° F (3.3° C to 7.8° C)

HEAT EXCHANGER TYPE	MODEL	SOURCE-SIDE	POOL-SIDE
Titanium pool-side exchanger and cupronickel source-side exchanger	WS03	6° to 8° F (3.3° C to 4.4° C)	1° to 3° F (.5° C to 1.7° C)
	WS05	7° to 13° F (3.9° C to 7.2° C)	2° to 6° F (1.1° C to 3.3° C)
	WS10	6° to 11° F (3.3° C to 6.1° C)	6° to 14° F (3.3° C to 7.8° C)

Table 3 - Temperature Chart (Water Source)

HEAT EXCHANGER TYPE	MODEL	SOURCE-SIDE	SPA-SIDE
Titanium ThermoLink®	SP05	2° to 8° F (1.1° C to 4.4° C)	3° to 6° F (1.7° C to 3.3° C)

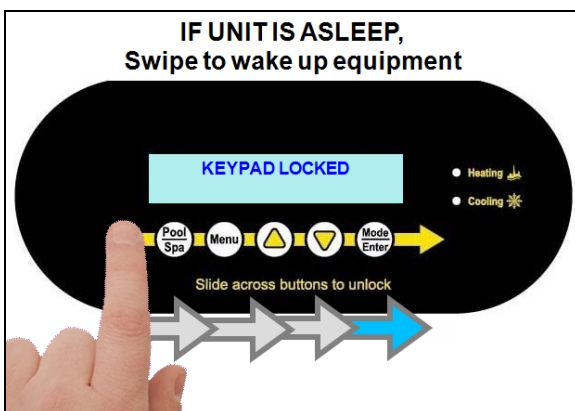
Table 4 - Temperature Chart (Sun Power)

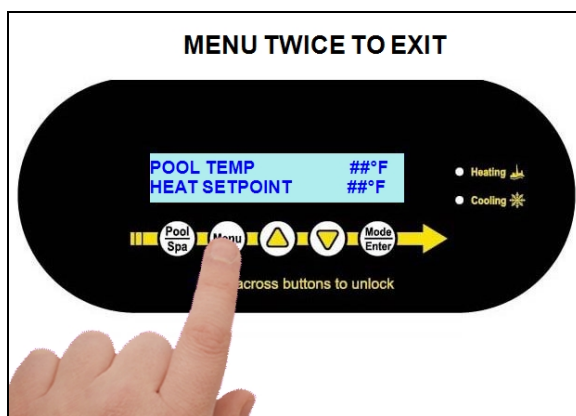
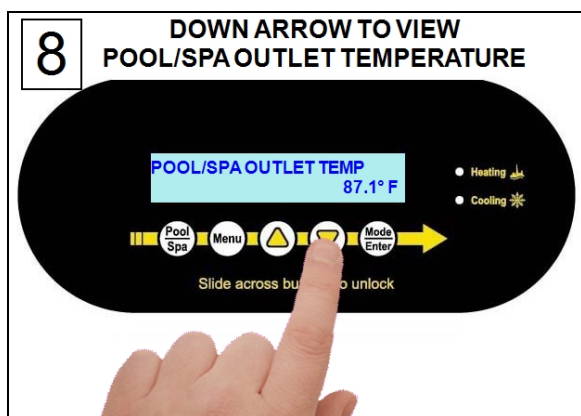
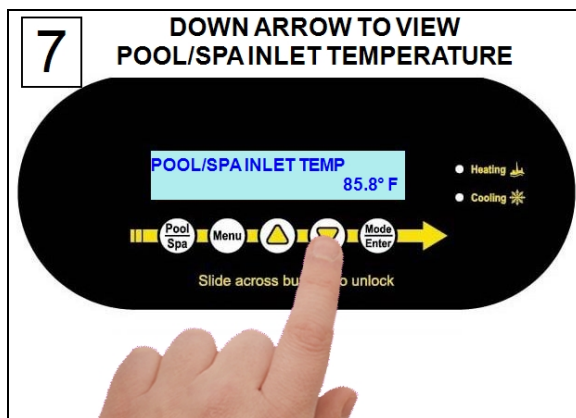
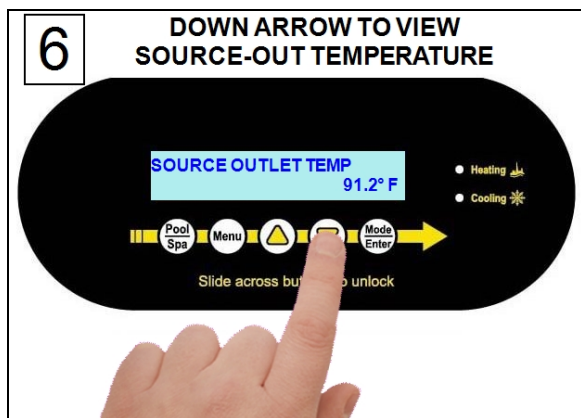
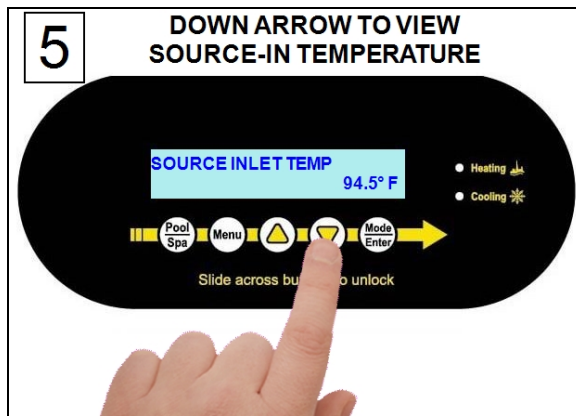
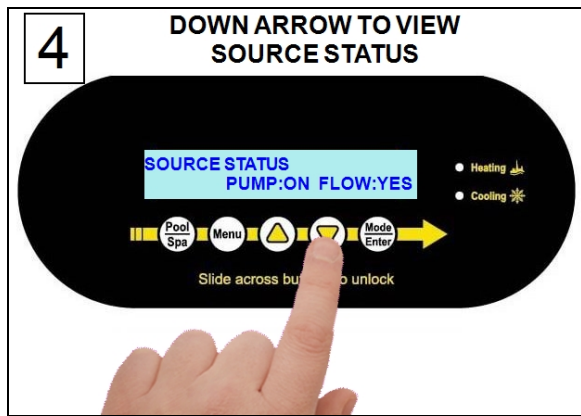
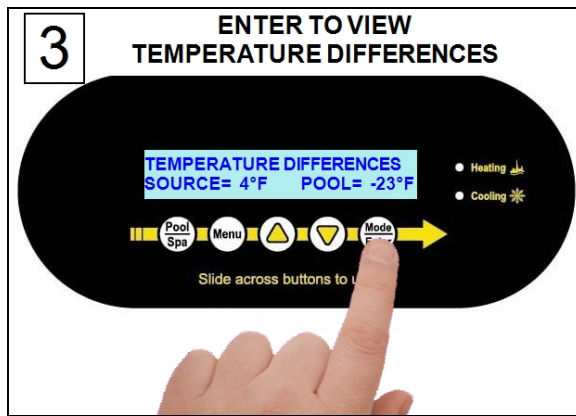
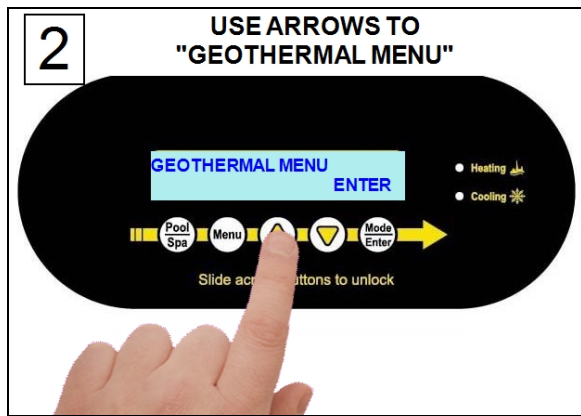
**PLEASE NOTE -**

- Temperature differences are based on pool and source water temperatures of 69° to 75° F. (20.5° to 23.8° C)
- For water temperatures outside this range, contact AquaCal®. See "Contacting AquaCal AutoPilot, Inc." on page 1.

## 2.7 Geothermal Menus

These menus are used when adjusting Water Flow Using  $\Delta T$  (Delta-T). (See *Adjusting Water Flow Using  $\Delta T$  (Delta-T)* on the previous page for more information.)







## 2.8 Planned Maintenance

An annual inspection and maintenance program is strongly recommended starting no later than one year after installation of the heat pump. In harsh environments or coastal areas, a bi-annual inspection is recommended. See the recommended inspection checklist.

AquaCal® can perform this service in limited areas. Contact Customer Support for more information.

### **DANGER**

Failure to heed the following will result in injury or death.

- Deactivate power while routing wiring to control board.
- Follow all National Electric Codes (NEC) and/or State and Local guidelines.

### **WARNING**

Failure to heed the following may result in injury or death.

- Annual inspection and service must be performed by a qualified heat pump specialist in order to prevent physical injury or damage to equipment. For tasks requiring handling refrigerant, an HVAC license is required.

#### **Recommended Inspection Checklist:**

- |  |
|--|
| 1. Clean Source Coil (As Applicable)   |
| 2. Check Contactor Points  |
| 3. Clean Heat Pump Cabinet   |
| 4. Check Flow / Pressure Switch  |
| 5. Apply Rust Inhibitors (As applicable)                                     |
| 6. Verify / Check Water Flow Delta-T   |
| 7. Check Compressor Capacitor Values   |
| 8. Check Compressor Amperage Draw  |
| 9. Check Internal Electrical Connections                                     |
| 10. Check Operating Refrigerant Pressures (As Applicable)                    |
| 11. Check Ambient and Water Temperature Sensors                              |
| 12. Check Proper Line and Control Voltage to Unit                            |
| 13. Identify Insect and Rodent Issues with Unit                              |
| 14. Identify Environmental Conditions of Concern (Run-Off, Sprinklers, etc.) |
| 15. Perform Operating Orientation (As Applicable)                            |

## 2.9 Winterizing

Failure to properly winterize the heat pump as needed may result in serious equipment damage.

### DANGER

Failure to heed the following will result in injury or death.

- Deactivate power while routing wiring to control board.
- Follow all National Electric Codes (NEC) and/or State and Local guidelines.

### WARNING

Failure to heed the following may result in injury or death.

- Deactivate all electrical power to heat pump before performing hard freeze procedures.

### NOTICE

Failure to heed the following may result in damage to equipment.

- Failure to winterize heat pump may result in serious equipment damage. Freeze damage is not covered under the heat pump warranty.
- While the plumbing connections are in the winterized condition (not fully tightened), it is imperative that water not run through the heat pump. Loss of water through loose plumbing connections may result in damage to circulation pump, pool and spa structures, and other equipment.

### Light Freeze Conditions

A light freeze is when the ambient air temperature falls below 32 degrees Fahrenheit (0° C) for less than 8 hours. Typically during light freeze conditions circulating (or moving) water will not freeze. Temporarily activate the filter pump for continuous operation during light freeze conditions.

### Hard Freeze Conditions

A hard freeze is when the ambient air temperature falls below 32 degrees Fahrenheit (0° C) for more than 8 hours. In areas where this condition is prevalent and sustained, the heat pump **MUST** be winterized for hard freeze conditions. Follow the correct procedure depending on the type of heat exchanger found in the heat pump.

#### ***PLEASE NOTE - WHEN WINTERIZING WATER SOURCE UNITS***

*For Water Source units both the pool and the source sides must be winterized. Your Water Source unit may have two different heat exchanger types on pool and source sides. Be sure to properly identify and follow the correct procedure for both heat exchanger types in your unit.*

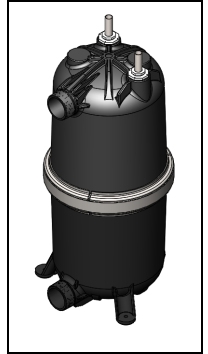
#### **Confirm Exchanger Type:**

1. Deactivate all electrical power to heat pump.
2. Deactivate the filter pump.
3. Remove the front access panel.
4. Identify heat exchanger from the illustration(s) in this section.
5. Reinstall front access panel. Then follow the procedure for the appropriate heat exchanger.

### **Titanium ThermoLink<sup>®</sup> Exchanger (with no Drain)**

6. Disconnect the plumbing to the heat pump at connection unions (removal is counter-clockwise).
7. Allow water to drain completely from the heat pump. Expect to see a lot of water drain out at first, and then a small amount to continue to drain out over a long period.
8. After heat pump has fully drained, partially reconnect plumbing connection unions.
9. Winterizing is complete.
10. When ready to use the heat pump again, hand-tighten connection unions. Reconnect electrical power, and set the operating mode on the heat pump. Activate the filter pump.

**No Drain**



### **Titanium ThermoLink<sup>®</sup> Exchanger (with no Drain)**

6. Disconnect the plumbing to the heat pump at connection unions (removal is counter-clockwise).
7. Allow water to drain completely from the heat pump. Expect to see a lot of water drain out at first, and then a small amount to continue to drain out over a long period.
8. After heat pump has fully drained, partially reconnect plumbing connection unions.
9. Winterizing is complete.
10. When ready to use the heat pump again, hand-tighten connection unions. Reconnect electrical power, and set the operating mode on the heat pump. Activate the filter pump.

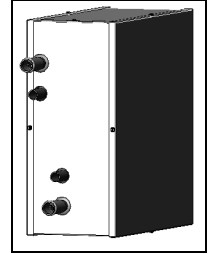
**No Drain**



## Cupronickel Tube in Tube Exchanger

6. Disconnect the plumbing to the heat pump at connection unions (removal is counter-clockwise).
7. Place a garden hose into the inlet side of the heat pump; wrap a clean rag around the hose to form a temporary seal.
8. Turn on the garden hose water supply.
9. Allow water to run through the heat exchanger for 2-3 minutes; fresh water should be seen exiting the pool's out-port.
10. Place a garden hose into the outlet side inlet of the heat pump; wrap a clean rag around the hose to form a temporary seal.
11. Turn on the garden hose water supply.
12. Allow water to run through the heat exchanger for 2-3 minutes; fresh water should be seen exiting the pool's in-port.
13. Place an air hose into the water inlet of the heat pump; wrap a clean rag around the hose to form a temporary seal.
14. Push all water from the water circuit using compressed air at approximately 50 psig (446 kPa). The residual water should be forced out of the heat pump's water outlet.
15. Allow compressed air to blow into the heat pump inlet for at least 15-20 seconds after the water stops coming out.
16. Repeat process on the outlet side.
17. Partially reconnect plumbing connection unions.
18. Winterizing is complete.
19. When ready to use the heat pump again, hand-tighten connection unions. Reconnect electrical power, and set the operating mode on the heat pump. Activate the filter pump.

**Cupronickel  
(Orientation  
depends  
on model)**



### IN THIS SECTION:

#### Fault Codes

AIR TEMP SENSOR OPEN or AIR TEMP SENSOR SHORT .....	31
CLOCK LOW BATTERY .....	31
ERROR AT MASTER UNIT .....	31
HIGH PRESSURE FAULT .....	32
HIGH WATER TEMPERATURE .....	32
HP5 SYSTEM LOCKOUT .....	32
LOW PRESSURE FAULT .....	33
LP5 SYSTEM LOCKOUT .....	33
MULTI-UNIT COMM FAULT .....	33
NO LOCAL EXPANSION .....	33
OTA SYSTEM LOCKOUT .....	33
SMART COMM FAULT .....	34
SOURCE FLOW FAULT .....	34
SOURCE-IN SENSOR SHORT or SOURCE-IN SENSOR OPEN .....	34
SOURCE-OUT SENSOR SHORT or SOURCE-OUT SENSOR OPEN .....	34
SOURCE HIGH WATER TEMP .....	34
SOURCE LOW WATER TEMP .....	34
WATER TEMP SENSOR SHORT or WATER TEMP SENSOR OPEN .....	35

#### Issues and resolutions

A Front Panel Warning Indicator is Red (Select Units) .....	35
Blank Display .....	35
Can't set temperature above 96° F (35.6° C) .....	36
Display Panel Not Responding .....	36
Displays "NO SYSTEM FIRMWARE" .....	36
Displays "NO POOL/SPA WATER FLOW" .....	36
Displays "NO SOURCE WATER FLOW" .....	36
Displays "SET TO SWITCH REMOTELY" .....	37
Displays "SET UNIT MODEL NUMBER" .....	37
Heat Pump Not Running .....	37
Heat Pump's Tripping Breaker .....	38
Heat Pump Won't Shut Off .....	38
Heat Pump Is Running, Not Heating .....	39
Heat Pump Is Running, Not Cooling .....	40
"Pool / Spa" Button Will Not Work .....	40

### 3.1 Fault Codes

A fault code indicates a specific issue or condition that will require action before the equipment can resume operating.

Please perform the following troubleshooting.

If the issue reoccurs, please contact AquaCal. See "*Contacting AquaCal AutoPilot, Inc.*" on page 1.

#### **DANGER**

Failure to heed the following will result in injury or death.

- Deactivate power while routing wiring to control board.
- Follow all National Electric Codes (NEC) and/or State and Local guidelines.

#### **WARNING**

Failure to heed the following may result in injury or death.

- Repairs must not be attempted by untrained or unqualified individuals.
- The heat pump contains refrigerant under high pressure. Repairs to the refrigerant circuit must not be attempted by untrained or unqualified individuals. Service must be performed only by qualified HVAC technicians. Recover refrigerant before opening the system.

#### **NOTICE**

Failure to heed the following may result in damage to equipment.

- Service by unauthorized personnel will void the heat pump warranty.

### AIR TEMP SENSOR OPEN or AIR TEMP SENSOR SHORT

#### ISSUE

Open or shorted air sensor.

#### RESOLUTION

A qualified technician should replace the air sensor.

### CLOCK LOW BATTERY

#### ISSUE

The real-time clock controller indicates a low battery condition.

- The time will reset to factory default.
- If connected, a gas backup heater may start and stop at an incorrect time when set to use a "SCHEDULED" mode.

#### RESOLUTION

A qualified technician should replace the battery. The date and time will need to be reset on the heat pump after replacement.

### ERROR AT MASTER UNIT

#### ISSUE

The heat pump is slaved to a master heat pump that is displaying a fault code.

#### RESOLUTION

The error at the master heat pump must be corrected before the slaved unit will resume operation.

## HIGH PRESSURE FAULT

### ISSUE

The refrigerant system's high-pressure switch is showing as open.

### RESOLUTION

#### Heat Only Units

Place heat pump in heating mode and perform the following troubleshooting.

Determine if an insufficient amount of water is being supplied to the equipment.

1. Confirm the filter pump is on.
2. If a multiple-speed filter pump is being used, run filter pump at a higher speed. Do not exceed the maximum flow rate for the model.
3. Confirm water is not being diverted away from the heat pump.
  - See "Water Flow Rates" on page 22.
  - See "Adjusting Water Flow Using  $\Delta T$  (Delta-T)" on page 23.

#### Heat and Cool Units (Reversing)

Place heat pump in heating mode and perform the following troubleshooting.

Determine if an insufficient amount of water is being supplied to the equipment.

1. Confirm the filter pump is on.
2. If a multiple-speed filter pump is being used, run filter pump at a higher speed. Do not exceed the maximum flow rate for the model.
3. Confirm water is not being diverted away from the heat pump.
  - See "Water Flow Rates" on page 22.
  - See "Adjusting Water Flow Using  $\Delta T$  (Delta-T)" on page 23.

## HIGH WATER TEMPERATURE

### ISSUE

Incoming water temperature has exceeded 110° F (43° C) and the unit has been deactivated. The heat pump will not operate until the incoming water temperature drops to 100° F (38° C) or lower.

### RESOLUTION

1. Determine if a gas heater is sending water directly to the heat pump. This situation would need to be corrected before continuing.
2. If a solar heater is sending water directly to the heat pump, the water can initially be hotter than 110° F (43° C). After the water from the solar panel normalizes, the fault will no longer display and the heat pump will resume as needed.
3. If the **HIGH WATER TEMPERATURE** fault continues to display, the water temperature sensor may require replacement.

## HP5 SYSTEM LOCKOUT

### ISSUE

The heat pump has locked due to five high-pressure faults during one call for heating or cooling.

### RESOLUTION

1. Deactivate then reactivate power to the heat pump to clear error.
2. Troubleshoot the high-pressure issue causing the error.
  - See "HIGH PRESSURE FAULT" above.

## LOW PRESSURE FAULT

### ISSUE

The refrigerant system's low-pressure switch is showing as open.

### RESOLUTION

If the heat pump is a reversing unit, place it in heating mode and perform the following troubleshooting.

Determine if an insufficient amount of water is being supplied to the equipment.

1. Confirm the filter pump is on.
2. If a multiple-speed filter pump is being used, run filter pump at a higher speed. Do not exceed the maximum flow rate for the model.
3. Confirm water is not being diverted away from the heat pump.
  - See "*Water Flow Rates*" on page 22.
  - See "*Adjusting Water Flow Using  $\Delta T$  (Delta-T)*" on page 23.

## LP5 SYSTEM LOCKOUT

### ISSUE

The heat pump has locked due to five low-pressure faults during one call for heating or cooling.

### RESOLUTION

1. Deactivate then reactivate power to the heat pump to clear error.
2. Troubleshoot the low-pressure issue causing the error.
  - See "*LOW PRESSURE FAULT*" above.

## MULTI-UNIT COMM FAULT

### ISSUE

Slaved heat pump is not receiving a signal from the master heat pump.

### RESOLUTION

1. Confirm the master heat pump is operating correctly. If, for example, no power is supplied to the master heat pump, an error will appear on the slaved heat pumps.

## NO LOCAL EXPANSION

### ISSUE

The Heat Pump expected an attached local expansion module to be active.

### RESOLUTION

A qualified technician should confirm the correct model number has been entered into the heat pump.

## OTA SYSTEM LOCKOUT

### ISSUE

A malfunction has occurred that could allow the water temperature to surpass a safe level. An installed "Over Temperature Alarm" kit has disabled the system.

- See "*Over Temperature Alarm Kit*" on page 45 for more information.

### RESOLUTION

Call for service.



## SMART COMM FAULT

### ISSUE

Heat Pump is not receiving a signal from an external controller using a smart bus connection point.

### RESOLUTION

1. Confirm a smart bus external controller is being used.
  - If unsure, contact installer of heat pump for more information. The heat pump may need to be reconfigured to set external controller to "none".
2. If using a smart bus external controller, confirm the controller is correctly set to send signals to the heat pump. See manuals or guides provided with the external controller.

## SOURCE FLOW FAULT

### ISSUE

If source water flow goes on and off 5 or more times during one call for heating or cooling, the Heat Pump will deactivate.

### RESOLUTION

Confirm source water pump is operating correctly.

## SOURCE-IN SENSOR SHORT or SOURCE-IN SENSOR OPEN

### ISSUE

Shorted or open water sensor.

### RESOLUTION

A qualified technician should replace the water sensor.

## SOURCE-OUT SENSOR SHORT or SOURCE-OUT SENSOR OPEN

### ISSUE

Shorted or open water sensor.

### RESOLUTION

A qualified technician should replace the water sensor.

## SOURCE HIGH WATER TEMP

### ISSUE

Incoming source water temperature has exceeded 108° F (42° C). The unit has been deactivated.

### RESOLUTION

The heat pump will not operate until the incoming source water temperature drops to 100° F (38° C) or lower.

## SOURCE LOW WATER TEMP

### ISSUE

Incoming source water temperature has fallen below 38° F (3° C). The unit has been deactivated.

### RESOLUTION

The heat pump will not operate until the incoming source water temperature rises to 42° F (5.5° C) or higher.

## WATER TEMP SENSOR SHORT or WATER TEMP SENSOR OPEN

### ISSUE

Shorted or open water sensor.

### RESOLUTION

A qualified technician should replace the water sensor.

## 3.2 Issues and Resolutions

### DANGER

Failure to heed the following will result in injury or death.

- Deactivate power while routing wiring to control board.
- Follow all National Electric Codes (NEC) and/or State and Local guidelines.

### WARNING

Failure to heed the following may result in injury or death.

- Repairs must not be attempted by untrained or unqualified individuals.
- The heat pump contains refrigerant under pressure. Repairs to the refrigerant circuit must not be attempted by untrained or unqualified individuals. Service must be performed only by qualified HVAC technicians. Recover refrigerant before opening the system.

### NOTICE

Failure to heed the following may result in damage to equipment.

- Service by unauthorized personnel will void the factory warranty.

Please perform the following troubleshooting.

For further assistance, please contact AquaCal. See "*Contacting AquaCal AutoPilot, Inc.*" on page 1.

## A Front Panel Warning Indicator is Red (Select Units)

### ISSUE

The Heat Pump is experiencing an incoming power fluctuation.

### RESOLUTION

An electrician should check for improper electrical site conditions.

## Blank Display

### ISSUE

The Heat Pump may have an incoming power problem.

### RESOLUTION

Confirm electrical power is being supplied to the heat pump from electrical disconnect(s).

**Can't set temperature above 96° F (35.6° C)****ISSUE**

The maximum allowed set temperature for a Water Source unit is 96° F (35.6° C).

**RESOLUTION**

Install an over temperature safety device. This will allow a maximum set temperature of 104° F (40° C).  
See "Over Temperature Alarm Kit".

**Display Panel Not Responding****ISSUE**

The heat pump's display panel will not respond to user input.

**RESOLUTION**

1. If heat pump display shows "**UNDER REMOTE CONTROL**", use the external control device to control the heat pump.
2. If needed, check with the external controller manufacturer for further assistance using that device.

**Displays "**NO SYSTEM FIRMWARE**"****ISSUE**

The heat pump has encountered a software error.

**RESOLUTION**

Call for service.

**Displays "**NO POOL/SPA WATER FLOW**"****ISSUE**

Low or no pool/spa water detected. This is normal when the circulation pump is deactivated.

**RESOLUTION**

1. Confirm the filter pump is on.
2. If a multiple-speed filter pump is being used, run at a higher speed to determine if the error persists. Do not exceed the maximum flow rate for your model.
3. Confirm water is not being diverted away from the heat pump.
  - See "*Water Flow Rates*" on page 22.
  - See "*Adjusting Water Flow Using  $\Delta T$  (Delta-T)*" on page 23.

**Displays "**NO SOURCE WATER FLOW**"****ISSUE**

Low or no source water detected.

**RESOLUTION**

1. Confirm the source water pump is on.
2. If a multiple-speed source water pump is being used, run at a higher speed to determine if the error persists. Do not the exceed maximum flow rate for your model.
3. Confirm water is not being diverted away from the heat pump.
  - See "*Water Flow Rates*" on page 22.
  - See "*Adjusting Water Flow Using  $\Delta T$  (Delta-T)*" on page 23.

## Displays "**SET TO SWITCH REMOTELY**"

### ISSUE

If when pressing the "Pool / Spa" button the display flashes the message "**SET TO SWITCH REMOTELY**", the heat pump is using a remote relay switch or a 3-wire controller.

### RESOLUTION

- The Pool and Spa thermostat automatically switch when using these modes.
- Operation manually will not be available when using these external devices. No action is required.

## Displays "**SET UNIT MODEL NUMBER**"

### ISSUE

The heat pump has encountered a software error.

### RESOLUTION

- The model number and serial number will need to be re-entered into the system. The system will then operate as normal.
- If the issue reoccurs, please contact the distributor or installing dealer.

## Heat Pump Not Running

### ISSUE

The heat pump will not run.

### RESOLUTION

1. Confirm equipment is receiving power. Is the heat pump display illuminated?
  - If not, confirm the main breaker (located at the power supply panel) and the disconnect switch (located near the heat pump) are both turned on.
  - If the display still does not illuminate, it is recommended that the heat pump installer or electrician confirm the heat pump is receiving power.
2. Confirm correct mode is selected.
  - See "*Activate Heat Mode, Cool Mode, Auto Mode, or Deactivate Equipment*" on page 6.
3. Confirm thermostat is set correctly.
  - When heating the water is desired, the thermostat should be set above the current water temperature.
  - When cooling the water is desired, the thermostat should be set below the current water temperature.
  - See "*Set Temperature*" on page 7.
4. If an error code is displayed, diagnose and correct the cause of the code.
  - See "*Fault Codes*" on page 31.
5. If the heat pump is using an external controller, the heat pump may not be set correctly to accept the controller's signal.
  - See "*Operating Heat Pump (With an External Controller)*" on page 15

## Heat Pump's Tripping Breaker

### ISSUE

The heat pump breaker(s) keeps tripping.

### RESOLUTION

1. If AquaCal® heat pumps have been connected using a multiple heat pump configuration, the configuration may be incorrect. Please confirm settings or contact installer of equipment.
2. Have an electrician confirm breakers are correct type, in good condition, and properly sized for the heat pump.

## Heat Pump Won't Shut Off

### ISSUE

The heat pump will not deactivate.

### RESOLUTION

#### ***PLEASE NOTE***

*When the heat pump is set to off, the display will show the current water temperature or no water flow indicator.*

1. Confirm the correct mode has been set on the heat pump.
  - See "Activate Heat Mode, Cool Mode, Auto Mode, or Deactivate Equipment" on page 6.
2. Confirm the heat pump has reached the desired temperature set on the thermostat. The heat pump will continue to run until the set temperature is reached.
  - See "Set Temperature" on page 7.
3. If the heat pump is using an external controller, it may not be set correctly. See the external controller's manual.

### ISSUE

The heat pump is running. But the water is not heating.

### RESOLUTION

1. If the heat pump is using an external controller, confirm it is set correctly.
  - See *"Operating Heat Pump (With an External Controller)"* on page 15.
  - If the heat pump is still not running correctly with this device, contact the installer of the device or the device's manufacturer for further assistance.
2. Confirm heat pump mode is set to heat.
3. Confirm thermostat is set to the desired water temperature.
4. Confirm valves are positioned to heat the correct body of water (either the pool or the spa). If heating a spa that overflows into a pool, confirm the spa is isolated when being heated (not flowing into the pool).
5. Confirm heat pump is transferring heat into the water.
  - Measure the pool-side and source-side discharge water coming out of the heat pump.
  - See *"Adjusting Water Flow Using  $\Delta T$  (Delta-T)"* on page 23.
6. If an error code is displayed, diagnose and correct cause of code.
  - See *"Fault Codes"* on page 31.
7. Confirm that the filter pump has a sufficient run-time. The heat pump will not run (or heat the water) without water flow.
  - See *"Heating Recommendations"* on page 44.
8. If heating a spa, deactivate air blower or venturi (if equipped) to allow for quicker heating times. For pools, deactivate water features, such as slides, waterfalls, or fountains to allow water to retain heat. Use of a liquid pool blanket product, such as an Aqua Blanket™, can also compensate for excessive heat loss.
  - See *"Liquid Blankets"* on page 45.

## Heat Pump Is Running, Not Cooling

### ISSUE

The heat pump is running. But the water is not cooling.

### RESOLUTION

1. If the heat pump is using an external controller, confirm the heat pump is programmed properly to allow for cooling.
  - See "*Operating Heat Pump (With an External Controller)*" on page 15.
2. Confirm the heat pump mode is set to cool.
3. Confirm the thermostat is set below the current water temperature.
4. Confirm valves are positioned to cool the correct body of water (either the pool or the spa). If cooling a spa that overflows into a pool, confirm the spa is isolated when being cooled (not flowing into the pool).
5. If an error code is displayed, determine and correct the condition causing the code.
  - See "*Fault Codes*" on page 31.
6. Confirm heat pump is transferring heat out of the water.
  - Measure the temperature of source-side and pool-side discharge water coming out of the heat pump.
  - See "*Adjusting Water Flow Using  $\Delta T$  (Delta-T)*" on page 23.
7. Confirm that the filter pump has a sufficient run-time. The heat pump will not run (or cool the water) without water flow.
  - See "*Cooling Recommendations*" on page 44.

## "Pool / Spa" Button Will Not Work

### ISSUE

The "Pool / Spa" button is disabled if the following devices have been configured on the heat pump. Check with installer if unsure of devices enabled on heat pump.

### RESOLUTION

- A 2-wire external controller.
- A 3-wire external controller.
- An external flow switch.

**IN THIS SECTION:**

4.1 Factory Defaults .....	41
4.2 Identifying Model Specifications .....	42
4.3 Weights .....	43
4.4 Heating Recommendations .....	44
4.5 Cooling Recommendations .....	44
4.6 Available Accessories .....	44

**4.1 Factory Defaults**

Certain programming options have been preset at the factory. These options can be overwritten for site-specific conditions.

**NOTICE**

Failure to heed the following may result in damage to equipment.

- Unauthorized adjustments in Service Menus (**not shown**) may void the heat pump's warranty.

User Menus		
MENUS	DEFAULT	OPTIONS
SET GAS BOOST	OFF	OFF ON
SET TIME / DATE	USER TO SET	
SET BACKUP HEAT MODE	OFF	OFF SCHEDULED 24HR
SET ENTRY CODE ENABLED	OFF	OFF ON
SET USER ENTRY CODE	01	
SET CALL-FLEX MODE	OFF	OFF CALL FLEX

**PLEASE NOTE:**

*Changing settings programmed by the heat pump installer in advanced menus is **not** advised. A loss of heat pump functionality may occur.*



Installer Menus		
MENUS	DEFAULT	OPTIONS
SET MULTI-UNIT MODE	OFF	OFF MASTER SLAVED
SET EXT. CTRL MODE	OFF	OFF SMART 2WIRE 3WIRE
SET TIME FORMAT	12 Hour	12 Hour 24 Hour
SET DATE FORMAT	MDY	MDY DMY
SET TEMPERATURE UNITS	Fahrenheit	Fahrenheit Celsius
SET BACKUP HEAT MODE	OFF	OFF SCHEDULED 24HR
SET ENTRY CODE ENABLED	OFF	OFF ON
SET USER ENTRY CODE	01	
SET CALL-FLEX INSTALLED	NO	YES NO
SET CALL-FLEX MODE	OFF	OFF CALL FLEX

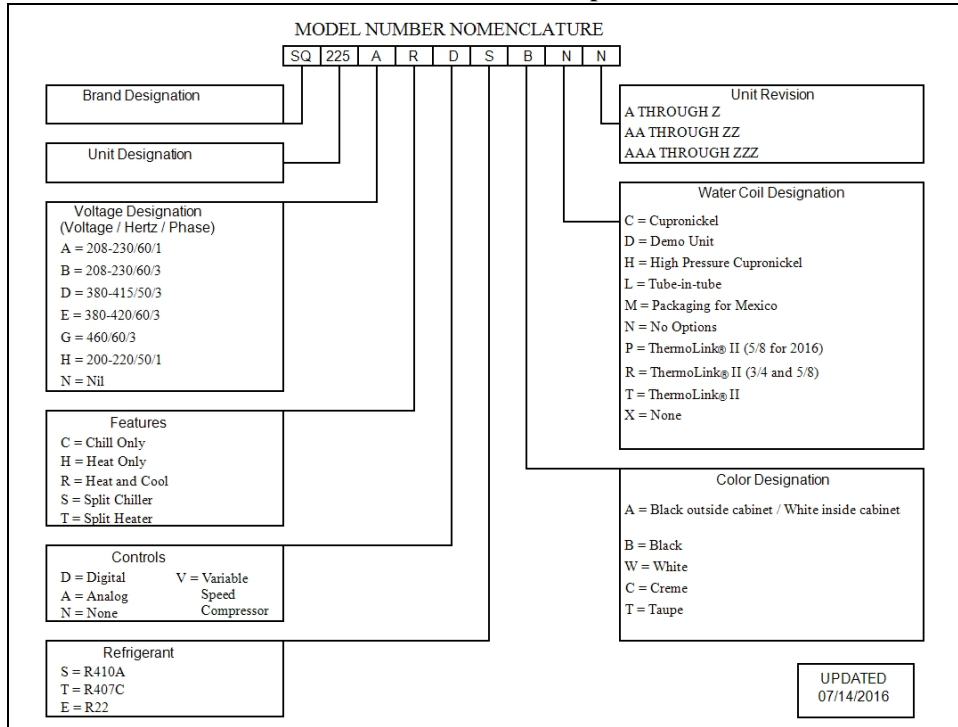
## 4.2 Identifying Model Specifications

1. Find Data Plate - The data plate is usually posted on the side of the equipment or the inside of the heat pump's access plate.
2. Find the model number on the data plate. The first letters and numbers indicate the model type.
3. The complete model number identifies the equipment's specifications.

**Data Plate Example**

MINIMUM CIRCUIT AMPACITY <input type="text"/>		MADE IN THE USA	
ELEC. SERVICE:	VOLTS <input type="text"/>	PH <input type="text"/>	HZ <input type="text"/>
MAXIMUM TIME DELAY FUSE OR HACR BREAKER <input type="text"/>		5	
COMPRESSOR VOLTS	<input type="text"/>	R.L.A. <input type="text"/>	L.R.A. <input type="text"/>
FAN MOTOR VOLTS	<input type="text"/>	H.P. <input type="text"/>	F.L.A. <input type="text"/>
REFRIGERANT: Circuit - Factory charged <input type="text"/>		Only oz/Kg <input type="text"/>	
Tested to <input type="text"/> psig High side / <input type="text"/> psig Low side		OUTDOOR UNIT	
AQUA CAL, INC. A TEAM HORNER COMPANY 2737 24 <sup>TH</sup> STREET NORTH ST. PETERSBURG, FL 33713 FACTORY SERVICE 727-823-5542		MODEL NUMBER <input type="text"/> <b>IIIIBAR CODEIII</b> SERIAL NUMBER <input type="text"/> <b>IIIIBAR CODEIII</b>	

## Model Number Example



### 4.3 Weights

#### **NOTE:**

*Specifications subject to change.*

Model Type	Model Number	Install Weight
Water Source	WS03 (source side Titanium)	290 Pounds (131.5 kg)
Water Source	WS03 (source side Cupronickel)	300 Pounds (136.1 kg)
Water Source	WS05 (source side Titanium)	300 Pounds (136.1 kg)
Water Source	WS05 (source side Cupronickel)	320 Pounds (145 kg)
Water Source	WS10 (source side Titanium)	745 Pounds (338 kg)
Water Source	WS10 (source side Cupronickel)	840 Pounds (381 kg)
SunPower	SP05 (source side Titanium)	340 Pounds (154 kg)
SunPower	SP05 (source side Cupronickel)	350 Pounds (158.8 kg)

#### 4.4 Heating Recommendations

The following recommendations will reduce the amount of time required to heat a pool. **If unsure of equipment heating capability, review equipment data plate.** See "*Identifying Model Specifications*" on page 42.

1. Confirm heat pump mode has been set to heating mode.
2. Set the desired temperature (set-point) for the water.
3. Temporarily set the filter pump for continuous operation.
  - This will allow the Heat Pump the time required to heat the water at start-up.
  - After the water has reached the desired temperature, reset the filter pump to normal operating time-frames.
4. Use a pool cover or blanket to reduce heating time.

#### 4.5 Cooling Recommendations

The following recommendations will reduce the amount of time required to cool a pool or cold plunge application. **If unsure of equipment cooling capability, review equipment data plate.** See "*Identifying Model Specifications*" on page 42.

1. Confirm heat pump mode has been set to cooling mode.
2. Set thermostat to desired water temperature.
3. Temporarily set the filter pump for continuous operation.
  - This will allow the Heat Pump the time required to cool the water at start-up.
  - After the water has reached the desired temperature, reset the filter pump to normal operating time-frames.

#### 4.6 Available Accessories

Accessories may be purchased through an authorized dealer of AquaCal® products.

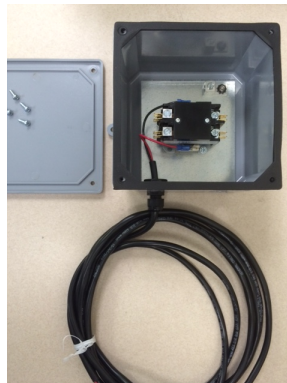
##### Bypass Valve Kit (# STK0135)

- When high flow rates are outside recommended specifications, please use this kit or an alternative bypass valve system.
- This kit can be used to control excessive water flow through the heat pump. It provides automatic flow adjustments for most applications.



##### Call Flex Accessory (# 0030-LEDS)

- This accessory will override a circulation pump to provide water to the heat pump when the set temperature is not met.



### Grid Flow Switch (# 0040S)

- Used for automatic pool/spa thermostat switching.
- This kit is not to be used on applications exceeding 50 PSI (345 kPa).

©2012 A.P.C.



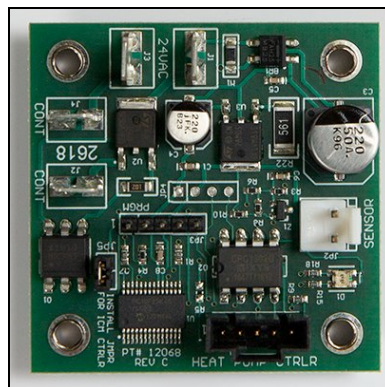
### Liquid Blankets

- An invisible liquid heat barrier designed to retain heat and extend the swimming season.
- AquaCal® recommends [Lo-Chlor®](#) Aqua Blanket™.



### Over Temperature Alarm Kit

- This kit is an additional safety device. It disables the heat pump if any malfunction occurs that allows the water temperature to surpass a safe level.
- This kit comes standard for SunPower equipment.
- In the case of a Water Source unit, if the kit isn't present, the maximum allowed set temperature is 96° F (35.6° C). If this kit is installed, the maximum allowed set temperature is 104° F (40° C).
- This kit is strongly recommended for all spa applications.
  - Single Phase Heat Pump - (# STK0221)
  - Three Phase Heat Pump - (# STK0222)



### Plumbing Unions

- 1 Inch Unions - (# PLP0059)
- 2 Inch Unions - (# PLS2627)



## Temperature Port Kit (# STK0096)

- This kit can be used to adjust water flow using Delta-T.
- The kit comes with a port, installation components, and a temperature probe.



