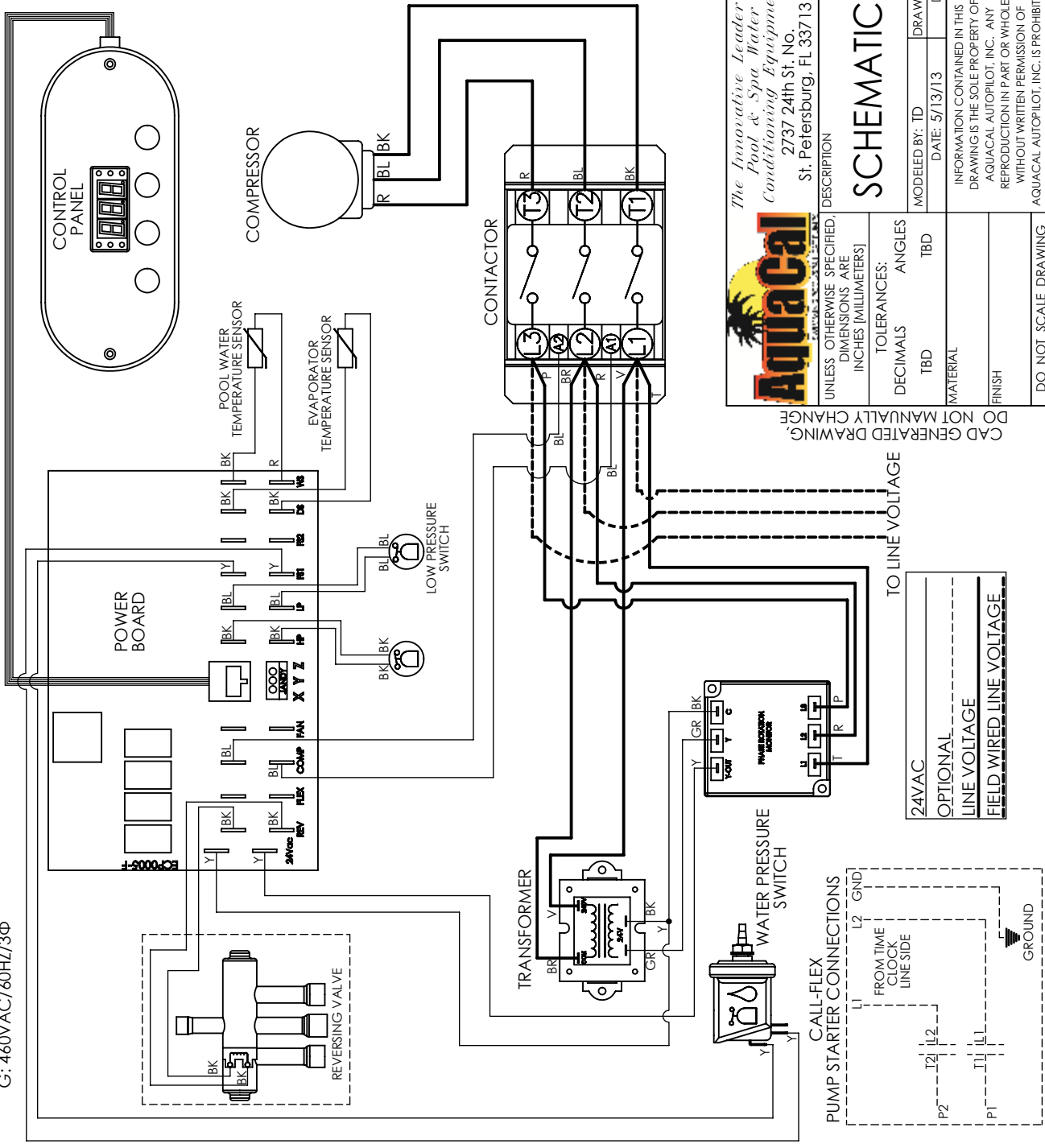


NOTES UNLESS OTHERWISE SPECIFIED:
 1. USE COPPER CONDUCTORS ONLY.
 2. TO BE WIRED IN ACCORDANCE WITH NAT'L ELEC (NEC) & LOCAL CODES.
 3. CONNECT TRANSFORMER TO CORRECT VOLTAGE.
 4. CUT RED WIRE ON PHASE ROTATION MONITOR FOR D-VOLT LINE VOLTAGE CODES:
 B: 208-230VAC/60HZ/3Ø
 D: 380-415VAC/50HZ/3Ø
 G: 460VAC/60HZ/3Ø



COLOR CODE

BL:	BLUE
BK:	BLACK
BR:	BROWN
BR/W:	BROWN AND WHITE
G:	GREEN
GR:	GRAY
P:	PINK
R:	RED
T:	TAN
V:	VIOLET
Y:	YELLOW
W:	WHITE

AquaCal
MANUFACTURED BY AQUACAL SYSTEMS, INC.

*The Innovative Leader In
 Pool & Spa Water
 Conditioning Equipment*

2737 24th St. No.
 St. Petersburg, FL 33713

AUTOPILOT SYSTEMS
INC.

SALT CHLORINE GENERATORS

SCHEMATIC, 3PH, WATERSOURCE

DESCRIPTION

UNLESS OTHERWISE SPECIFIED,
 DIMENSIONS ARE
 INCHES (MILLIMETERS)

TOLERANCES:
 DECIMALS: TBD
 ANGLES: TBD

MATERIAL: TBD
 FINISH: TBD

DO NOT SCALE DRAWING

MODELED BY: TD DRAWN BY: TD PROJECT ENG: TD CHKD BY: TD
 DATE: 5/13/13 DATE: 8/5/13

INFORMATION CONTAINED IN THIS DRAWING IS THE SOLE PROPERTY OF AQUACAL AUTOPILOT, INC. ANY REPRODUCTION IN PART OR WHOLE WITHOUT WRITTEN PERMISSION OF AQUACAL AUTOPILOT, INC., IS PROHIBITED.

LTM0739

SCALE: DWG SIZE: 1:4 A REVISION: DEV-G

SHEET 1 OF 1

REVISION TABLE

REV.	PCA NUMBER/DESCRIPTION	CHANGED BY	DATE
DEV-D	ADDED COMPRESSOR CONTACTOR WIRES	TOMD	9/16/2014
DEV-E	ADDED REVERSING VALVE OPTION	TOMD	10/27/2014

1 2 3 4 5 6 7 8

A B C D