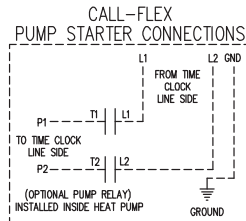
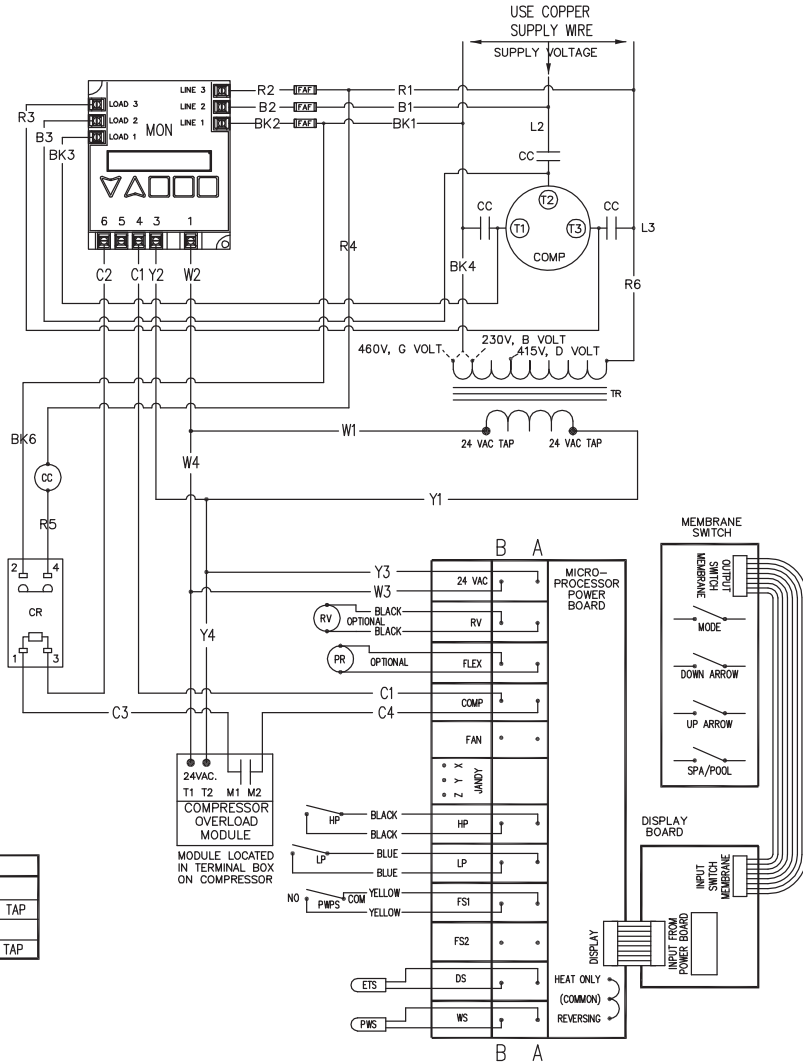


NOTES UNLESS OTHERWISE SPECIFIED
 1. USE COPPER CONDUCTORS ONLY.
 2. TO BE WIRED IN ACCORDANCE WITH NATIONAL ELECTRIC (NEC) & LOCAL CODES.
 3. EXTERNAL CONTROLLER HOOK UP:

- A. TWO-WIRE CONTROLLERS (JANDY RS 4,6,8, COMPOOL LX 3800)
 a. WIRES CONNECT TO Y & Z ON THE MICROPROCESSOR.
 b. WITH HEATER DISPLAYING WATER TEMPERATURE, PRESS THE UP & DOWN ARROW AT THE SAME TIME UNTIL CF1 APPEARS.
 c. PUSH THE POOL/SPA KEY UNTIL LOC APPEARS PUSH THE UP ARROW UNTIL 50 APPEARS.
 d. PUSH THE POOL SPA KEY UNTIL JAO DISPLAYS; PUSH THE UP ARROW UNTIL 2 DISPLAYS.
 e. WHEN THE WATER TEMPERATURE DISPLAYS, TURN BOTH THERMOSTATS TO THE OFF POSITION.
 B. THREE-WIRE CONTROLLERS (JANDY AQUASWITCH, COMPOOL) (USE ONLY COMMON AND THE SPA TERMINALS IN THE CONTROLLER)
 a. WIRES CONNECT TO FS2 ON THE MICROPROCESSOR.
 b. WHEN THE HEATER DISPLAYS WATER TEMPERATURE, HOLD THE UP AND DOWN ARROW AT THE SAME TIME UNTIL CF1 APPEARS.
 c. PUSH THE POOL/SPA KEY UNTIL LOC APPEARS; PUSH THE UP ARROW UNTIL 50 DISPLAYS.
 d. PUSH THE POOL/SPA KEY UNTIL FS2 DISPLAYS; PUSH THE UP ARROW UNTIL 1 APPEARS.
 e. WHEN THE WATER TEMPERATURE DISPLAYS, SET BOTH THE THERMOSTATS.

REVISIONS				
REV.	PCA# / DESCRIPTION	DATE	CHG	ENG
REL-A	INITIAL RELEASE	12/17/09	SCF	DKS
REL-B	REMOVED PHASE ROTATION CONTROLLER INSTRUCTIONS	8/1/14	TD	TD
REL-C	ADDED D-VOLTAGE NOTES	6/9/15	TD	TD



VOLTAGE CODES	
CODE	DESCRIPTION
B	200-230 VAC, 60 Hz, 3Ø-USE 240 VAC TRANSFORMER TAP
G	460 VAC, 60 Hz, 3Ø-USE 460 VAC TRANSFORMER TAP
D	380-415 VAC, 50 Hz, 3Ø-USE 415 VAC TRANSFORMER TAP

LEGEND	
————	FACTORY WIRING
-----	FIELD WIRING
CC	COMPRESSOR CONTACTOR
COMP	COMPRESSOR MOTOR
ETS	EVAPORATOR TEMPERATURE SENSOR
HP	HIGH PRESSURE SWITCH (REFRIGERANT)
LP	LOW PRESSURE SWITCH (REFRIGERANT)
MON	DIGITAL VOLTAGE MONITOR
PR	PUMP RELAY
PWPS	POOL WATER PRESSURE SWITCH
PWS	POOL WATER TEMPERATURE SENSOR
RV	REVERSING VALVE
TR	TRANSFORMER

WIRE COLORS	
B	BLUE
BK	BLACK
R	RED
W	WHITE
C	BLUE/WHITE TRACER

CAD GENERATED DRAWING; DO NOT MANUALLY CHANGE

APPROVALS	DATE
DRAWN BY: S. FREDETTE	12/17/09
CHECKED BY: D. SMITH	12/18/09
APPROVED BY: SEB	12/18/09

THE INFORMATION CONTAINED IN THIS DRAWING IS THE SOLE PROPERTY OF AQUACAL. ANY REPRODUCTION IN PART OR WHOLE WITHOUT WRITTEN PERMISSION OF AQUACAL IS PROHIBITED.

America's Leading Pool Heat Pump Manufacturer
 2737 24th St. No.
 St. Petersburg, FL 33713

SCHEM, W/S, DIGITAL MONITOR	
SIZE DWG. NO. A LTM0196	REV. A
DO NOT SCALE DRAWING	SCALE: N/A CAD FILE: LTM0196 SHEET 1 OF 1